



SAINT LOUIS UNIVERSITY

Trudy Busch Valentine School of Nursing



Student Handbook  
2023-2024  
Baccalaureate Nursing Program

This handbook has been designed to assist you by centralizing important information, policies, and guidelines relevant to your nursing education at Saint Louis University. You are urged to read this handbook and keep it while a nursing student at Saint Louis University. You are responsible for the information, which is published herein.

## Contents

<b>Introduction</b>	<b>6</b>
Overview	6
Accreditation	6
Mission Statement	6
Statement of Philosophy	7
Diversity, Equity, and Inclusion Statement	9
Conceptual Framework for Prelicensure/Baccalaureate	9
Cura Personalis	9
Student Learning Outcomes	12
The Health Professions Covenant	12
Advisement, Registration and Progression	<b>13</b>
Traditional 4-Year Program Students Policy Regarding Access to the Nursing Sequence	13
ABSN Program Students Policy Regarding Access to the Nursing Sequence	13
Second Degree Students:	13
Junior Transfer Students:	14
RN to BSN Program Students Policy Regarding Access to the Nursing Sequence	14
Academic Integrity	<b>15</b>
The School of Nursing Standards on Professional and Ethical Conduct	<b>20</b>
Procedure	22
Preliminary Investigation	22
Formal Hearing	22
Academic Records	23
Use of Records within the School of Nursing	23
Class and Clinical Practice Attendance	23
Student Performance	24
Directives for Scientific Writing in the School of Nursing	24
Communication	<b>24</b>
Catalog	24
E-mail	24
Scholarships and Loans	24
Academic Advising	<b>25</b>



	<b>3</b>
Registration	25
Withdrawal or Leave of Absence from Saint Louis University	26
Failure to Register	26
Late Registration for Nursing Courses	26
Adding a Course	26
Dropping a Course	26
Courses Taken on a Pass-Fail Basis	27
Courses Taken for Audit	27
Course Extension	27
Permission to Take Courses at Other Colleges or Universities	27
ID Cards/ Badges	28
Parking	28
SLU Ride Program	28
<b>Campus Activities and Projects</b>	<b>28</b>
National Student Nurses Association	28
Sigma, Global Nursing Excellence / Delta Lambda At Large	28
Student Representatives on Faculty Committees	29
Procedure for Selection	29
Student Opinions	29
<b>Examinations</b>	<b>30</b>
Computer Requirements for School of Nursing: Essential Information	30
Examination Policies:	31
Medication Calculation Competency (MCC) Policy	32
Procedure	32
<b>Clinical Requirements</b>	<b>34</b>
Competencies and Performance Standards Essential for Nursing Practice	34
The Uniform Policy	35
CastleBranch	36
Immunization and Screening Requirements	36
CPR Requirement	37
In case of emergency (ICE) contact	37
Evidence of Health Insurance	37
Background Check and Drug Screen	37
Drug Screening Policy	37
RN to BSN Practice Experience Requirements	39
Documentation and Enforcement	39
<b>Health Care and Student Services</b>	<b>40</b>



	<b>4</b>
Center for Accessibility and Disability Resources (CADR)	40
Health Services	40
Acquired Immune Deficiency Syndrome (AIDS), Human Immunodeficiency Virus (HIV) and other Infectious Diseases:	41
Report of an Injury or Illness	41
<b>Policies/ Procedures in the Clarke Skills Lab</b>	<b>41</b>
Signing out Equipment from the Clarke Skills Lab	41
Blood and Body Fluid Precautions	42
Procedure for Reporting Student Exposure to Blood-Borne Pathogens (For Campus-Based Students)	43
Summary of incidents and forms	44
<b>Grading Policies</b>	<b>45</b>
<b>Progression Policies</b>	<b>45</b>
Probationary Status	46
Academic Probation	46
Clinical Probation	46
Clinical Failure	46
Dismissal	47
Appeal of an Academic Decision	47
Appeal of a Program Dismissal	48
Admission, Progression, and Graduation Committee Procedures	48
Legal Sanctions	50
<b>Leaving the Nursing Program</b>	<b>50</b>
<b>Additional Policies and Regulations</b>	<b>50</b>
Dean's List	50
Faculty	50
Course Evaluation	50
Missouri Nurse Practice Act 335.066	50
Professional Liability	51
Client's Right to Privacy	52
Transportation of Patients	52
Examination of Records by Students	52
Tobacco Policy	52
<b>Graduation</b>	<b>54</b>
Degree Application	54
Graduation Requirements	54
Graduation with Honors	54



	5
Assessment and Achievement Examinations	54
National Council Licensure Examination (NCLEX)	55
Commencement, Cap and Gown Information	55
School of Nursing Graduate Pins	55
Handbook Approval	55
Helpful Names and Contact Information	56
<b>Incident Report</b>	<b>60</b>
WORKERS' COMPENSATION PROCEDURE INSTRUCTIONS	62
<b>Authorization for Examination or Treatment</b>	<b>63</b>
Work Related	63
Type of Substance Abuse Testing	63
Special Examination	63



## Introduction



## Overview

The Baccalaureate Nursing Program Student Handbook includes information specific to the undergraduate nursing program. Information regarding Saint Louis University policies may be found in the Academic Catalog on the Saint Louis University Office of the Registrar Website [Contact the Registrar : SLU](#). General Saint Louis University policies apply to all students attending Saint Louis University unless superseded by policies of the School of Nursing.

## Accreditation

Saint Louis University School of Nursing is fully accredited by the Higher Learning Commission (HLC) of the North Central Association of Colleges and Schools. SLU has been continuously accredited since 1916.

The baccalaureate degree in nursing/master's degree in nursing/ and Doctor of Nursing Practice at Saint Louis University is accredited by the Commission on Collegiate Nursing Education ([AACN NCHE](#)).

The School of Nursing is fully approved by the Missouri State Board of Nursing.

Prior to 2005, Saint Louis University School of Nursing was accredited by the National League for Nursing Accrediting Commission from 1928 through 2006.

*Approval Body: Undergraduate and Prelicensure Program Committee  
Revised and Accepted: 5/2017*

## Mission Statement

The mission of the School of Nursing is education of “the whole person”—mind, body, heart and spirit, within a dynamic, diverse and technological society. The School of Nursing, an integral unit of Saint Louis University, seeks to fulfill its mission of education and leadership in the development of nursing as a discipline and profession through teaching, research, practice, and service in ways consistent with the Catholic, Jesuit values of the University. The School of Nursing acts responsibly by setting priorities and exercising stewardship to assure the best use of its resources.

The School, through the teaching component of the mission, prepares students at baccalaureate, master's, post-master's, and doctoral levels for professional nursing practice and interprofessional collaboration to care for the whole person, the “*cura personalis*”. The School creates a student-centered environment both on campus and with distance education that recognizes and actively addresses the diverse learning needs of students and an academic climate that promotes intellectual inquiry among faculty and students.



The School, through the research component of the mission, advances the active engagement of faculty and the involvement of students in the innovative scholarly process of discovery, dissemination, and translation of knowledge. The School promotes interprofessional collaboration in the conduct of research to maintain or improve health.

The School, through the service/practice component of the mission, promotes quality health care of individuals, families and communities to alleviate ignorance, poverty, injustice and hunger; extend compassionate care to the ill and needy; and to maintain and improve the quality of life for all persons. Saint Louis University School of Nursing faculty, staff, students, and graduates provide this holistic care by working with people in diverse environments to maintain or improve health.

*Approval body: General Faculty Assembly (GFA)*

*Approved: May 2008*

*Reviewed and revised: November 18, 2013*

*Reviewed and revised: January 22, 2018*

*Reviewed and revised February 14, 2022*

## Statement of Philosophy

The School of Nursing, as an integral component of Saint Louis University, upholds the Judaeo-Christian philosophy and mission of the University to pursue truth for the greater Glory of God and for the service of humanity. The faculty of the School of Nursing believes that all persons are created by God and possess intrinsic worth and dignity. We believe the very origin of nursing lies in the fundamental capacity to care for those in need. Recognition of *cura personalis* requires that acceptance, compassion and respect characterize relationships among faculty, staff, administrators, and students in the School, and relationships with individuals, families, and communities and other health care professionals in nursing practice settings. The School of Nursing provides a collegial environment of academic freedom in which students develop knowledge, insight, values, accountability, and professional competence.

Study of the liberal arts provides an essential foundation for the development of an educated person. Such an education assists students to develop greater knowledge of self, of God, of other people, and of the world in which they live. Attributes, such as intellectual insights, collaboration, communication, logical and analytical skills, and the exercise of independent judgment, are acquired through study of the humanities and the biological, physical, behavioral, and social sciences. This foundation also facilitates the study and practice of professional nursing.

Nursing as a profession and as a discipline is concerned with the promotion and maintenance of health, prevention of illness, care and rehabilitation of sick and disabled persons, and compassionate care of the dying. As a discipline developing its own science, nursing continues to expand its body of knowledge and to identify its articulations with the theories and practices of other relevant disciplines.

Nursing education is a collaborative endeavor of faculty and students in which each contributes and shares talents to enhance learning. Faculty members, having achieved expertise, facilitate each student's search for knowledge and self-actualization. Given students' individual abilities, interests, and career goals and changing societal needs, the faculty provides a range of educational programs and uses a variety of teaching methods. All educational experiences are designed to help students develop as critically reflective and socially responsible persons who



are capable of making informed, prudent ethical decisions. The faculty encourages student self-assessment and evaluation, thereby preparing graduates for continuing personal and professional development. The faculty believes that continuing education is an integral component of nursing education and offers continuing education programs as a community service.

Initial preparation for professional nursing practice at Saint Louis University is organized around explicit concepts that structure the nursing content in the curriculum; such structure facilitates learning. Upon completion of the baccalaureate generalist program, the graduate possesses the theoretical base in nursing and related disciplines and the skills – both interpersonal and technological – required for practice. The graduate demonstrates the ability to integrate knowledge with skills and to collaborate with individuals, families, communities and other health care professionals in nursing practice settings. The graduate is prepared to begin a career in the practice of nursing in a variety of health care settings with individuals of diverse cultural backgrounds and ages. Education at the baccalaureate level prepares graduates for advanced study in nursing.

Master's education provides for the attainment of advanced knowledge and the ability to apply nursing theories in practice and for the development of clinical leadership skills. Upon completion of the master's generalist program, the graduate is prepared with the ability to provide leadership for nursing care at the microsystem level. Nurse practitioner education at the master's level provides for the mastery of a methodology for advanced practice to address patient needs within a population focus. Graduates of the master's program contribute to the development of nursing through their practice, leadership, scholarly activities, and involvement in professional associations. Education at the master's level prepares graduates for doctoral-level study in nursing.

Doctoral education provides leadership for the continuing development of nursing as a discipline and a profession. The Doctor of Nursing Practice (DNP) prepares nurses for advanced practice with the specialized knowledge and skills needed to diagnose and manage health and illness and improve the quality of health care in all practice settings using evidence and outcome-based methodologies. DNP graduates demonstrate clinical expertise, and promote high quality patient-centered care with an emphasis on interprofessional collaboration within the health care delivery system.

The Doctor of Philosophy in Nursing (PhD) fosters commitment to knowledge generation and expanding the science of the discipline. As stewards of the profession, graduates apply methods of knowledge discovery to advance nursing scholarship and practice. The study of nursing as a scientific discipline is complemented by advanced study in related disciplines to address complex healthcare issues.

Approval Body GFA

Revised and approved: November 18, 2013; May 2010

Reviewed and approved by Administrative Council: October 16, 2017



Higher Purpose. Greater Good.™







## Diversity, Equity, and Inclusion Statement

The Trudy Busch Valentine School of Nursing (TBVSON) is committed to fostering a community where all faculty, staff, and students are respected, accepted, and valued. We strive to constantly advance diversity, equity, and inclusion and support efforts to embrace the unique attributes of every person. We are determined to provide excellence through recruiting and retaining a diverse workforce and student body by creating a climate that is respectful and supportive of everyone's success. For further information, [Diversity, Equity, and Inclusion Resources : SLU](#)

## Conceptual Framework for Prelicensure/Baccalaureate

### Cura Personalis

Cura Personalis is a Latin phrase that translates as “**care for the entire person.**” The expression is a hallmark of Ignatian spirituality and describes the Jesuit ideal of encouraging the fullest possible development of all people.

Nurses provide this holistic care by working with people and environments to maintain or improve health.

**Person:** Recipients of nursing care are integrated bio/psycho/sociocultural/spiritual beings in constant interaction with the environment. This includes individuals, families, groups, and communities. The person is an adaptive system who interacts with the environment to maintain integrity in those physiological, psychological, spiritual and sociocultural dimensions. Adaptation is a positive process which allows the individual to meet basic needs, maximize function, and progress toward self-actualization

The *physiological dimension* includes processes involved in nutrition/metabolism, activity/exercise, elimination, sleep/rest, sensory/perception, and sexuality/reproduction. The *psychological dimension* relates to cognitive, emotional and developmental processes, self-perception and self-concept, coping and stress tolerance, and learning and decision-making. The *spiritual dimension* involves values and beliefs regarding the meaning and purpose of life as well as the individual's relationship to a higher being. The



Higher Purpose. Greater Good.™



*sociocultural dimension* refers to the broader community, cultural, and other groups, the family, health care and other organizations, and support systems for the person. Learned patterns of behavior, cultural values, norms, customs, roles and relationships with others, and health/illness practices are included in this dimension.

**Environment:** All external factors that surround or interact with the person. These factors influence development and behavior, and stimulate the person to make adaptive responses. It may include individuals, families, groups, communities, physical surroundings, settings, milieu, and influences from the social, financial, and political arenas.

**Health:** A dynamic state of being that fluctuates along a continuum from high level wellness to death. These fluctuations occur in response to change in the person and/or in the external environment. The person strives to achieve maximal physiological, psychological, sociocultural, and spiritual integrity.

**Nursing:** A science and an art concerned with assisting individuals who have actual or potential health-related difficulties in adaptation. The goal of nursing is to assist the person toward maximal physiological, psychological, sociocultural, and spiritual integrity.

Nursing as a discipline includes content and processes related to the role of nurse as designer and provider of care, manager/coordinator of care, educator, politician, consultant, counselor, and researcher. Core concepts for nursing are communication, collaboration, curiosity, competence, care, and cure.

Professional values are the foundation for practice; they guide interactions with patients and families, professional colleagues, and the public. Nurses, guided by their values, demonstrate ethical behaviors in providing safe, compassionate health care. The core professional values are: altruism, autonomy, human dignity, integrity and social justice.

*Approval Body: Undergraduate and Prelicensure Program Committee*

*Approved: 2/19/1999*

*Reviewed and Approved: 10/21/2003*

*Revised and Approved: 05/14/2013*



Saint Louis University Prelicensure  
/Undergraduate Program  
*Cura Personalis* Conceptual Model of Nursing



Revised and Approved  
05/14/2013



Higher Purpose. Greater Good.™



## Student Learning Outcomes

The graduate of Saint Louis University's baccalaureate nursing program is a generalist who is able to:

1. Relate to people as unique individuals possessing worth, dignity, and potential for self-actualization.
2. Synthesize theoretical and empirical knowledge from the humanities and natural, social, behavioral, and nursing sciences to provide safe, effective nursing care.
3. Establish relationships based on understanding of self and others, and of interpersonal and group dynamics.
4. Practice in a variety of settings with clients of all ages and diverse sociocultural backgrounds.
5. Utilize critical thinking and problem solving skills, in application of the nursing process, to achieve optimal client adaptation.
6. Assist clients, at any point on the health-illness continuum, to mobilize and use adaptive resources for promotion, maintenance and restoration of health.
7. Collaborate with interprofessional colleagues, community representatives, and consumers to enhance health care.
8. Apply evidence-based knowledge as the basis for safe, effective nursing practice.
9. Apply the professional code of ethics and professional standards to clinical practice.
10. Demonstrate personal and professional responsibility, accountability, and self-direction.
11. Demonstrate leadership principles in professional and interprofessional practice.
12. Demonstrate understanding of health care policy issues, trends and strategies as they influence accessibility, accountability and affordability in health care delivery.
13. Utilize appropriate information and healthcare technologies to enhance the delivery of client care.

*Approval Body: Undergraduate and Prelicensure Program Committee*

*Approved: 05/2013*

*Reviewed and Approved: 05/2015*

## The Health Professions Covenant

As a health care professional dedicated to enhancing the well-being of individuals and communities, I am committed to achieving and sustaining the highest level of professional competence, to fulfilling my responsibilities with compassion for patients' suffering, and to helping patients make their own informed choices about health care whenever possible. Recognizing that effective health promotion, disease prevention, and curative and long-term care are products of the combined efforts of teams of health professionals, I pledge collaboration with all of my colleagues similarly committed to meeting health care needs of individuals and their communities. Further, I will work within my profession to encourage placement of the patient's and the public's interests above the self-interests of my individual profession.



Higher Purpose. Greater Good.™



## Advisement, Registration and Progression

### Traditional 4-Year Program Students Policy Regarding Access to the Nursing Sequence

Access to the nursing sequence will be given in the following order:

1. Students who enroll, as new freshmen, in the School of Nursing at Saint Louis University and successfully complete all prerequisite courses with a minimum 2.5 cumulative grade point average by the end of the spring semester of the freshman year will be the first group considered for a place in sophomore nursing courses.
2. Students who enroll, as new freshmen, at Saint Louis University in a college or school other than nursing and transfer to the School of Nursing will be the second group considered. Transfer students must have a 3.2 GPA and demonstrated ability to successfully complete science courses, preferably at Saint Louis University.
3. Transfer students enrolled in another college or school within Saint Louis University who then apply to the School of Nursing will be the third group considered. Transfer students must have a 3.2 GPA and demonstrate ability to successfully complete science courses, preferably at Saint Louis University.
4. Students who complete course work at a university, college or community college other than Saint Louis University and apply to Saint Louis University for the first time in the nursing sequence will be the fourth group considered. External transfer students must have a GPA of 3.4 or higher on a 4.0 scale. Successful completion of Human Anatomy and Human Physiology OR Human Anatomy and Physiology 1 and Human Anatomy and Physiology 2, Chemistry and lifespan Human Growth and Development is recommended. Extracurricular activities are considered in admission decisions.

*Approval Body: A P & G committee and General Faculty Assembly*

*Approved: 03/18/1996*

*Revised and Approved: January 2002, May 2005, August 2013*

### ABSN Program Students Policy Regarding Access to the Nursing Sequence

#### Second Degree Students:

To be considered for admission, you must have completed a baccalaureate or higher degree at a regionally accredited U.S. college or university or an international equivalent, with a grade point average of 3.2 on a 4.0 system in previous college work. All international coursework must be evaluated by an approved evaluation agency (WES or ECE).

Prior to the beginning the program, you must also have successfully completed the following general requirements or comparable coursed with a grade of “C” or higher from a regionally accredited university, college or community college:

- Chemistry (3 credits)
- Human Anatomy and Physiology (6-8 credits)
- Microbiology (3 credits)
- Inferential and Descriptive Statistics (3 credits)
- Theology or Religion (3 credits)



- Ethics (3 credits)
- Human Growth and Development - Lifespan (3 credits)
- Social Behavioral Science (3 credits)

### Junior Transfer Students:

You must have a minimum cumulative grade point average of 3.20 on a 4.00 system in previous college work and at least 77 transferable credit hours from a regionally accredited university, college or community college (a maximum of 64 credit hours can be transferred from a community college.)

The 77 credit hours must include all courses necessary to meet Saint Louis University School of Nursing requirements. A minimum of 130 semester hours are required to graduate from the ABSN program. Prior to beginning the program, you must also have successfully completed the following general requirements or comparable courses with a grade of "C" or higher from a regionally accredited university, college or community college:

- Advanced Strategies of Rhetoric and Research (3 credits)
- Literature (3 credits)
- History (3 credits)
- Fine Arts (3 credits)
- Philosophy (3 credits)
- Theology (3 credits)
- General Psychology (3 credits)
- Introduction to Sociology (3 credits)
- Chemistry (3 credits)\*
- Human Anatomy and Physiology (6-8 credits)\*
- Microbiology (3 credits)\*
- Inferential and Descriptive Statistics (3 credits)
- Medical Ethics (3 credits)
- Human Growth and Development Across the Lifespan (3 credits)
- Elective (3 credits)

\* Laboratory components are not required for science courses. Transcripts are evaluated on an individual basis; however, it is recommended and may be required that all sciences are completed within the previous 10 years.

### RN to BSN Program Students Policy Regarding Access to the Nursing Sequence

Access to the nursing sequence will be given in the following order:

RN students with less than a 2.5 cumulative (all transcripts) GPA must take a minimum of six credit hours at the School for Professional Studies (SPS) and earn a grade of "C" or better in all SPS courses in order to be eligible for transfer/ admission to the School of Nursing.



RN students with greater than 2.5 cumulative (all transcripts) GPA who have completed all required Arts and Sciences courses may transfer to the School of Nursing and take up to 6 credit hours of nursing electives instead of Arts and Sciences electives if the student requests to do so.

Saint Louis University School of Nursing can only accept transfer registered nurse students from SPS to its RN to BSN program that are currently residing in one of the following states: Alabama, Alaska, Arizona, Arkansas, California, Colorado, Delaware, Florida, Georgia, Hawaii, Illinois, Indiana, Iowa, Kansas, Michigan, Mississippi, Missouri, Montana, Nebraska, Nevada, New Hampshire, New Jersey, New Mexico, Ohio, Oklahoma, South Carolina, South Dakota, Tennessee, Texas, Vermont, Virginia, West Virginia and Wisconsin.

Note: Enrolled students must also be living in one of the listed states throughout all coursework at SLU.

*Approval Body: Undergraduate and Prelicensure Program Committee,  
Approved: 12/2016*

## Academic Integrity

Academic integrity is honest, truthful and responsible conduct in all academic endeavors. The mission of Saint Louis University is “the pursuit of truth for the greater glory of God and for the service of humanity.” Accordingly, all acts of falsehood demean and compromise the corporate endeavors of teaching, research, health care, and community service via which SLU embodies its mission. The University strives to prepare students for lives of personal and professional integrity, and therefore regards all breaches of academic integrity as matters of serious concern. The governing University-level Academic Integrity Policy was adopted in the spring of 2015, and can be accessed on the Provost’s Office website at:

[Academic Policies : SLU](#)

The Policy on Academic Integrity is designed to promote ethical conduct within the University community by:

- Defining the responsibilities of various members of the University community;
  - Defining violations of academic integrity;
  - Setting minimum standards for reporting and adjudicating violations of academic integrity;
1. **Responsibilities of Members of the Community** To create a learning environment in which high standards of academic integrity are prized requires the efforts of everyone in the University community.
    - **Faculty** are responsible for adhering to high standards of academic integrity in their own research and professional conduct; for laying out relevant parts of the policy on their syllabi and assignments; explaining key terms to students and following procedures for reporting and adjudicating possible violations both in and out of their academic unit. Furthermore, faculty are encouraged to create assignments that minimize the possibility of academic dishonesty through clear expectations and to help to create an environment in which academic integrity is uppermost.



- **Students** are responsible for adhering to University standards of academic integrity, helping to create an environment in which academic integrity is respected, and reporting violations of the policy to instructors, department chairs, or administrators, as appropriate.
  - **Staff** are responsible for calling the attention of their supervisors to possible violations of academic integrity, for modeling high standards of academic integrity in their own professional conduct and research and for otherwise supporting a community of academic honesty and trust.
  - **Academic administrators** such as Deans, Chairs and Directors are responsible for addressing and managing cases of academic dishonesty in accordance with University policies and those of their academic units. One exception is that alleged violations of academic integrity in scientific research will be addressed in accordance with the Research Integrity Policy of the University. Administrators in academic units are also responsible for providing students or others charged with violations of academic integrity appropriate notice of the charges and the opportunity to respond in ways laid out in unit and University policies.
2. **Violations of Academic Integrity** Definitions to guide academic units in setting and applying their academic integrity policies are as follows (more than one violation may apply):

**Falsification** entails misrepresentations of fact for academic gain. Instances include:

- Lying to or deceiving an instructor about academic work;
- Fabricating or misrepresenting documentation or the data involved in carrying out assignments;
- Fabricating, misrepresenting, or altering in unauthorized ways information in academic records belonging to an instructor or to any academic department or administrative unit in the University.

**Plagiarism** involves the representation of someone else's thoughts, words, and/or data as if they were one's own or "self-plagiarism" which is the use of material prepared for one class and submitted to another without proper citation and without the permission of the instructor. Instances include:

- Quoting directly from someone else's written, artistic or spoken work without using quotation marks or indented quotations and without giving proper credit to the author or artist; for example, cutting and pasting text from the internet and making it appear to be your own work.
- Paraphrasing or incorporating someone else's ideas, concepts, arguments, observations, images, objects, music, or statements without giving proper credit;
- Submitting as one's own work a paper or other assignment/project that has been prepared, either wholly or in part, by another person, group, or commercial firm without citation or acknowledgment.





***Cheating*** involves the use of unauthorized assistance to gain an advantage over others. Instances include:

- Copying from another student's examination or using unauthorized assistance, aids, technological resources such as cell phones, calculators, translation software or Internet based applications in taking quizzes or examinations;
- Using resources beyond those authorized by the instructor to complete assignments such as writing papers, preparing reports, giving oral presentations, making models, multimedia projects, sound recordings, creating visual materials such as drawings, videos, or photographs or presenting material on the internet;
- Acquiring, disseminating, or using tests or any other academic forms of assessment belonging to an instructor or a member of the staff through any means (including social media) without prior approval;
- Influencing, or attempting to influence, any University employee in order to affect a grade or evaluation;
- Hiring or otherwise engaging someone to impersonate another person in taking a quiz or examination or in fulfilling other academic requirements.

***Sabotage*** entails disrupting or seeking to prevent the academic pursuits of others. It includes:

- Interfering with work or undermining the academic success of others in the university community in an intentional way for the purpose of negatively impacting that person's academic performance;
- Modifying, stealing, or destroying intellectual property such as computer files, library materials, artwork, personal books or papers.
- Performing any action that would impact research outcomes such as lab tampering, falsification of data, or destruction of research resources.

***Collusion*** involves unauthorized collaboration with another person or persons for the purpose of giving or gaining an academic advantage in such activities as completion of assignments or examinations without explicit permission of the instructor. Collusion may include any or all of the other violations of academic integrity as defined above. For example, if two students developed a plan that enabled them to improve their performance on an assignment that was supposed to be completed independently, they would be guilty of collusion.

***Concealment*** entails failing to call to the attention of a faculty member or administrator violations of academic integrity that an academic unit requires be reported.

3. **Reporting and Adjudicating Violations of Academic Integrity** Individual academic units in the University must take into account standards of academic and professional conduct for their own disciplines. Therefore, the University Academic Integrity Policy attempts no single set of procedures for adjudicating violations of academic integrity at the academic unit level and only applies standards for process, record keeping, and appeals to the Office of the Provost. (Exception: Alleged violations of academic integrity in scientific research will be guided by the University's Research Integrity Policy.) Each academic unit is



expected to develop and implement an academic integrity policy inclusive of the following guidelines (see individual college/school/center policies for specific guidelines)

**Minimal procedures** for infractions of academic integrity include:

- Maintenance of confidentiality
- Formal charges of violations of academic integrity
- Notification of charges
- Opportunity for response by those charged
- Opportunity to waive a hearing
- Procedures to avoid conflict of interest
- A hearing
- Notification of findings
- Provision of information on appeals to the Provost

***When an alleged violation involves two units***, the academic unit responsible for reporting a violation of academic integrity is the one offering the course or program in which the alleged violation occurred.

- The academic unit in which the course is offered is expected to take the appropriate action (e.g., failure in the course) and any further actions should be taken in collaboration with the student's academic home unit.
- In the event that a course is cross-listed, the Deans or Directors of the academic units in question will determine which will take the lead.
- If the student being investigated is an unclassified graduate student, the Associate Provost for Graduate Education will have jurisdiction.
- If the person is an undecided undergraduate (University College), the Associate Provost for Undergraduate Education will have jurisdiction

***Sanctions*** will be imposed according to the policy standards of the academic unit with jurisdiction of the faculty member teaching the course or supervising the academic experience or leading the academic program in which the violation occurred. Academic unit with jurisdiction as defined as the unit of the faculty member teaching the course or leading the academic program in which the violation occurs. Formal charges of violations of academic integrity do not preclude other disciplinary action that the University may take if circumstances warrant additional sanctions.

Sanctions are to be commensurate with the nature of the offense and with the record of the student regarding any previous infractions. Sanctions may include, but are not limited to,

- A lowered grade;
- Failure on the examination or assignment in question;
- Failure in the course;
- Notice of the infraction in the violator's permanent record;
- Participation in training sessions;
- Probation;
- Suspension from the School of Nursing



- Suspension from the University;
- Expulsion from the School of Nursing
- Expulsion from the University;
- Revocation of University degree; or
- A combination of the above.

In extraordinary circumstances, the University reserves the right to withhold or revoke a degree in consultation with the academic unit as appropriate. There is no statute of limitations for degree revocation.

Additionally, each SLU College, School, and Center has adopted its own academic integrity policies. The SLU School of Nursing standards for professional and ethical conduct follow. All SLU students are expected to know and abide by these policies (University and School of Nursing) which detail definitions of violations, processes for reporting violations, sanctions, and appeals. Please direct questions about any facet of academic integrity to your faculty, the option coordinator, the Associate Dean for Undergraduate and Pre-licensure Education, or the Dean of the School of Nursing.

*\*Adopted Spring 2015*



Higher Purpose. Greater Good.™



## The School of Nursing Standards on Professional and Ethical Conduct

The University is a community of learning whose effectiveness requires an environment of mutual trust and integrity. As members of this community, students share with faculty and administrators the responsibility to maintain this environment of academic integrity. Nursing students are expected to have high standards of integrity in academic and in clinical settings. Integrity is a reflection of the respect that one holds for oneself and others. It is manifested through a student's behavior in class and in the clinical setting.

Saint Louis University School of Nursing has established standards for determining the professional and ethical conduct of students. All students enrolled in the School of Nursing are expected to adhere to a standard of behavior that is consistent with the high standards of their profession. Compliance with all institutional rules and regulations, city, state, and federal laws is required. For additional information on professional integrity, please refer to the American Nurses Association Code of Ethics.

Not all forms of inappropriate behavior that would raise serious questions concerning a student's status as a health professional can be listed. However, students are expected to display respect, trust, and integrity in the classroom and clinical area through the following examples:

### I. **Professional Demeanor. Students are expected to:**

- Maintain a neat and clean appearance in attire that is acceptable as professional to the patient population and in keeping with the uniform/dress policy (see the Uniform Policy)
- Maintain equilibrium under pressure of fatigue, professional stress, or personal problems.
- Avoid the effects of alcohol, narcotics, intoxicants, hallucinogens, or illegal substances.
- Demonstrate respect for the expertise and responsibility of faculty both in the classroom and clinical areas.
- Refrain from damage to, the abuse of, or theft of any person or any property owned by the University, or any hospital/clinic or other affiliated organization.
- No possession of a firearm, weapon, explosives, or other dangerous objects or substances on university property or at healthcare agencies (see University policy and healthcare agency policies).

### II. **Concerns for the welfare of patients. Students are expected to:**

- Perform all aspects of nursing care with a thoughtful, and professional attitude.
- Refrain from making inappropriate remarks and remarks with sexual overtones.
- Treat patients with respect and dignity both in their presence and in discussions with peers.
- Display concern for the total patient.

### III. **Concerns for the rights of others. Students are expected to:**

- Deal with class peers, professional and staff personnel, faculty, and all other members of the health care team in a considerate, respectful manner and with a spirit of cooperation.
- Avoid offensive language or gestures, physical and/or verbal violence, threats, or intimidation.
- Treat all persons encountered in a classroom setting or a professional capacity with respect regardless of race, religion, gender, sexual orientation, or disability.



- Maintain confidentiality of information regarding patients, classmates, and faculty.
- “A Nurse's Guide to the Use of Social Media”
  - DESCRIPTION: This brochure is designed to help both new and experienced nurses understand how social media can be properly used in the profession without breaking patient privacy and confidentiality laws. It outlines:
    - Potential consequences for violating patient confidentiality by using various scenarios and situations
    - Uncovers common myths and misunderstandings about social media
    - Provides tips for how nurses can use social media appropriately while avoiding disclosing confidential patient information”
      - (NCSBN, August, 2018, [A Nurse's Guide to the Use of Social Media | NCSBN](#))

**IV. Responsibility to duty. Students are expected to:**

- Perform duties to the best of one’s ability and persevering until duties are complete or notifying responsible persons of problems.
- Be punctual in attendance at class, clinical, conferences, and other clinical duties or offering appropriate explanations when unable to be present.
- Notify instructor and supervising preceptors prior to absence or inability to carry out duties
- Assume responsibility for patient care with appropriate supervision.
- Identify emergencies and respond appropriately.
- Ensure that they can be located by faculty or staff personnel when on duty.
- Be physically, mentally and emotionally fit to perform assigned clinical or laboratory duties unimpaired by fatigue, illness or effects of medications or other substances (as determined by the student’s clinical or lab instructor/preceptor)

**V. Trustworthiness. Students are expected to:**

- Maintain honesty in written and verbal documentation on health/patient records, course work and other documents.
- Complete assignments and tests without solicitation, receipt, or provision of any unauthorized assistance.
- Accurately and honestly report clinical hours for all nursing courses.

Should violation of these policies occur, sanctions may include a range of responses depending on the severity of the violation. These could include a written warning, referral to the appropriate Administrator within the School of Nursing (SON) or University to review the alleged violation, or immediate removal from the classroom or clinical site. Significant and/or continued violations may result in administrative withdrawal from the class or the school.

*Approval Body: Undergraduate and Prelicensure Program Committee  
Approved: 2/4/2009; Revised and Approved: Spring 2015 and 2016*



## Procedure

Any alleged or suspected violation of academic or professional integrity will be reported by the instructor to the course coordinator/coordinator of the option and the Associate Dean. Steps of procedure are as follows:

### Preliminary Investigation

1. An investigation (discussion) will occur between student and instructor. If the issue is not resolved, then the following steps will be taken.
2. A complaint of the alleged student violation will be submitted in writing to the option coordinator by the instructor. This should occur as close in time to the incident as reasonably possible.
3. A subsequent investigation (discussion) will occur between student, instructor and coordinator/or another faculty. A copy of the written complaint and of this policy statement will be given to the student. On the basis of the preliminary investigation, the coordinator will decide whether there is reasonable cause to believe that a violation of academic or professional integrity has occurred. If there is reasonable cause to believe a violation has occurred, and a resolution cannot be agreed upon by the instructor, coordinator and student, then a formal hearing shall be scheduled. If there is not reasonable cause to believe a violation has occurred, then the complaint will be dismissed. The Associate Dean will be informed of the outcome of this investigation.

### Formal Hearing

1. Notice of the alleged violation and date of the hearing will be given in writing by the coordinator to the student.
2. The Hearing shall be held before the Admissions, Progression and Graduation Committee (APG) of the School of Nursing.
  - a. The student, the faculty, and the (APG) Committee have the right to present witnesses and to ask questions of witnesses at the hearing.
  - b. Pertinent records, exhibits, and written statements may be accepted as evidence for consideration by the committee at the discretion of the chairperson.
  - c. After the hearing, the committee shall determine by majority vote whether it believes the student has violated the policy. The committee's determination shall be made on the basis of whether it is more likely than not that the accused student committed the violation.
  - d. A letter shall be sent by the chairperson of the APG Committee to the student, complainant and the option coordinator of findings of fact and making a recommendation to the director as to whether a violation has been committed and, if so, the appropriate sanction.
  - e. The Chairperson of the APG committee's decision shall be sent in writing to the student and complainant with a copy to the committee.
  - f. Sanctions shall include:
    - i. Repeating the assignment – which could affect the grade
    - ii. Repeating the course
    - iii. Probation
    - iv. Suspension
    - v. Dismissal from the school



- g. In accordance with the University wide statement of Student Rights and Responsibilities, in the Code of Student Conduct, the disciplinary sanction of dismissal is required to be recorded on the student's permanent academic record.
- h. The student may appeal the decision of the committee to the Dean of the School of Nursing by written letter filed within two weeks after the committee's decision. The Dean of the School of Nursing's decision shall be put in writing to the student, faculty, option coordinator and committee within two weeks.

Approval Body: Undergraduate and Prelicensure Program Committee and Master's Program Committee, Approved: May 5, 2005

## Academic Records

The student's official academic record is maintained as the transcript in the University Registrars' Office. Clinical evaluation documents are maintained electronically.

### Use of Records within the School of Nursing

1. Within the School of Nursing, faculty members with a legitimate educational interest have access to student records through the Associate Dean, Undergraduate and Prelicensure Education.
2. References directed to the school will be answered by form letter giving only the facts of public knowledge, which are defined as facts of attendance, dates of attendance, and the date of graduation if a degree was conferred or is anticipated to be conferred soon.
3. The students' names, dates of attendance, degrees, honors conferred and other information are considered public information and thus, may be confirmed upon request.
4. If a student wishes any academic or personal information released outside the School of Nursing, the student must complete the appropriate form, which can be obtained from the Saint Louis University Registrar's office. If a comprehensive letter of reference regarding the student's professional abilities is requested, the student should request such from a faculty member with this knowledge. Copies of such reference letters will remain the property of that faculty member and will not be added to the student's academic record.
5. Records of student course grades are retained by faculty for at least three years; final examination papers and clinical evaluations are retained for at least six months after the end of a course.

## Class and Clinical Practice Attendance

Students are expected to attend all classes, laboratory and clinical sessions. Students enrolled in clinical nursing courses are notified by the instructors at the beginning of each course of the procedure to follow in the case of an absence. Unauthorized absence is a serious matter and must be resolved to the satisfaction of the instructor before a final grade will be issued.

Examinations are to be taken and assignments are to be submitted as scheduled. Students are expected to adhere to guidelines.

When a student is absent because of an authorized student activity, the absence may be excused by the instructor, provided the faculty member directing such student activity secures prior approval from the Dean of the School of Nursing's office and so informs the student.

For instances of excused absence, make up examinations, or late assignments; the responsibility for making special arrangements remains with the student.



Students are responsible for their own transportation to assigned areas for clinical experiences. For some of these experiences, access to an automobile is necessary. Assignment to experiences cannot be made to accommodate transportation requests. Clinical experiences may take place any day of the week, any shift, based on the learning experience, agency and faculty availability.

## Student Performance

Students are evaluated in nursing courses according to the specific behavioral objectives of each course. These are discussed with students at the beginning of the course and each student is given online access to the objectives. The student must demonstrate attainment of these behaviors in order to successfully complete the course. The clinical instructor discusses the evaluation with the student during and at the end of each nursing course. Students and faculty sign the clinical evaluation after it is discussed.

## Directives for Scientific Writing in the School of Nursing

The faculty of the School of Nursing believe that as baccalaureate graduates of Saint Louis University, students should be able to write in an organized, coherent and effective manner. Grammar and spelling should be correct. Proper credit should be given to the appropriate sources. Credit should be given not only for direct quotations, but also for paraphrasing the findings of others. The format suggested in the Publication Manual of the American Psychological Association (current edition) has been approved by the faculty and is to be used for assigned papers in all nursing courses.

## Communication

### Catalog

Information regarding University policies and programs may be found in the Saint Louis University Academic Catalog. The catalog may be found on the Saint Louis University Office of the Registrar website: <https://catalog.slu.edu/colleges-schools/nursing/>

### E-mail

Students are responsible for checking their SLU e-mail, including SLU Canvas, regularly for messages from their instructors, advisors, or others in the School of Nursing for information related to specific courses or School of Nursing activities and events.

## Scholarships and Loans

Saint Louis University makes every effort to assist students with financial aspects of their education.

The University's Office of Student Financial Services is your most important resource for financial assistance. The "Getting Started" packet is mailed to all admitted and re-enrolling students. It contains information about the various scholarships, grants and loan programs along with a FAFSA (Free Application for Federal Student Aid.) If you have been admitted or are a continuing student and have not yet completed the FAFSA, please call and request one from the Financial Office (314) 977-2350. The FAFSA should be submitted as early as possible. SLU's filing priority deadline is February 1.





Our FAFSA school code is 002506.

The School of Nursing administers several scholarships and loans primarily for currently enrolled nursing students. See the following link for additional information:

[Nursing Scholarships : SLU](#)

Consider checking the local public libraries' reference section for information on scholarships, loans, and fellowships for college students. The Office of Student Financial Services also has lists of work-study job opportunities for those students who qualify for the Federal Work Study Program. Ask a Financial Aid counselor if you qualify. Should you have questions, please visit [Work Study : SLU](#) or [contact your financial aid counselor](#).

## Academic Advising

The faculty of the School of Nursing believes that the Integrated Advising System with faculty mentoring and professional academic advising are integral components of the educational experience. All students in the traditional nursing major are assigned to a faculty mentor and professional academic advisor on entry to the nursing program who will work with them during their entire academic career.

Accelerated Baccalaureate students are assigned to a faculty mentor. RN to BSN students are assigned a faculty mentor who also serves as their academic advisor.

The faculty mentor will be an active participant in the students' professional decision-making process, exploration of career goals, program choices and curriculum planning, and recommend courses of study and experiences that would be advantages for the student post-graduation. The professional academic advisor will aid students with developmental transitions, plan and approve course registration for students, clarify the program/curriculum requirements, monitor the students' academic progress and refer students to resources for academic and support services on campus.

## Registration

Prior to each pre-registration period, traditional 4-year BSN students must contact their faculty mentor and meet with their professional academic advisor to review their academic progress and program plan. Following these appointments, the advisor will release the student to self-register on-line through BANNER Self-Service ([Registration](#)). Detailed directions for on-line registration are available in the Schedule of Classes, [helpdesk@slu.edu](mailto:helpdesk@slu.edu) (977-4000) or the Office of the Registrar at 977-2269 ([Registrar@slu.edu](mailto:Registrar@slu.edu)).

REGISTRATIONS ARE SUBJECT TO ADMINISTRATIVE CHANGE TO INSURE THAT ALL STUDENTS ARE PLACED IN COURSES THEY NEED AND COURSES AND CLINICAL GROUPS ARE BALANCED ACCORDING TO FACULTY AVAILABILITY AND CLINICAL AGENCY REQUIREMENTS.

RN-BSN students will be contacted by their program coordinator. ABSN and AMSN students will be bulk registered and emailed by course support to check registration. You may be asked to register if you transition to a decelerated curriculum.



## Withdrawal or Leave of Absence from Saint Louis University

If needed, contact your advisor, faculty mentor, and/ or option coordinator to determine which option would be best for you, given your situation. See the following link for information about the process and things to consider when making this decision:

LOA [Forms : SLU](#)

## Failure to Register

Students who fail to register for courses for two consecutive semesters will be required to reapply to the School of Nursing in order to reactivate their records. Such students will be required to meet the curriculum requirements in force at the time of readmission.

## Late Registration for Nursing Courses

Students are expected to be present for the first scheduled class in nursing courses in order to receive full benefit of the course orientation. Students are not allowed to report late for these courses without the prior permission of the Associate Dean and the course coordinator.

Students may be administratively withdrawn from courses if, in the opinion of the course coordinator and the Associate Dean, they have insufficient progress in the course without considerable individual orientation.

## Adding a Course

Students may add a course through BANNER Self-Service any time during pre-registration through the first two weeks of the semester. When adding a general education course after the first class has met, students should seek approval from the course instructor.

## Dropping a Course

Students may drop a course through Banner at any time during the posted dates designated by the University. These dates are posted on the Registrar's website. In general, the deadline for a sixteen-week course occurs at week 10. Once you withdraw from a course, your instructor and advisor will be notified of the dropped course. You will also receive a prompt that dropping a course may change your anticipated date of graduation. It is highly suggested that you personally notify your advisor to make appropriate curriculum plan changes when you drop any course.

**Students will be unable to drop a course beyond the posted dates.**

ABSN, RN-BSN, and TBSN should discuss dropping courses with their option coordinator.

## Courses Taken on a Pass-Fail Basis

Courses taken with a Pass/Fail grading option cannot be used to fulfill curriculum and upper division requirements. Courses taken on a pass/fail option are not calculated into the grade point average.



## Courses Taken for Audit

Courses taken for Audit cannot be used to fulfill curriculum requirements and are not calculated into the grade point average. Students intending to take a course for Audit should meet with the course coordinator to seek approval and clarify the expectations for participation in the course.

## Course Extension

To receive additional time to complete courses students must:

1. Submit completed Petition for Course Completion Extension (Student Form #2) and
2. Receive approval by the instructor.

Students must complete the course work by the approved deadline, which cannot be longer than one year after the course's final grades were due.

Two exceptions are:

1. Incompletes in prerequisite courses must be completed and graded prior to the first meeting for which the course is a prerequisite.
2. Incomplete courses for a graduating student must be completed and graded 30 calendar days after the conferral date.

An Incomplete Course will be awarded a grade of "F", by the Office of the University Registrar, if the course is not completed by the approved deadline.

## Permission to Take Courses at Other Colleges or Universities

Under special circumstances, students may be permitted to fulfill some course requirements at another college or university while attending Saint Louis University. Petition for Undergraduate Off-Campus Enrollment retrieved from the Saint Louis University Office of the Registrar's website (Form #7) must be completed by the student and submitted for approval. The student will receive notification of approval.

A minimum grade of C (2.0) is required for any course to be accepted for transfer. The transferred course is not calculated into the Saint Louis University grade point average. No more than 64 semester credits from a community college can be applied toward the baccalaureate degree. Per the Missouri Articulation Plan, RN students may transfer more than 64 credit hours.

To meet the University residency requirement, the last 30 of the final 36 credit hours of coursework must be completed at Saint Louis University.

Transcripts of the course(s) must be requested immediately after completion. This should be an official transcript sent from the Registrar directly to the Registrar at Saint Louis University. Transcripts issued to the student will not be accepted. Failure to provide the transcript in a timely manner may prevent progression in the nursing sequence or delay graduation.

## ID Cards/ Badges

The South Campus policy requires all students to display photo identification at all times. This policy will be rigorously enforced for all persons entering the buildings east of Grand. Students will have a University photo ID that can be adapted for regular wear. Public safety will challenge any and all individuals in the complex who do not display one of the acceptable forms of identification. The ID cards will be necessary to gain access to the School of Nursing after



4:00 pm weekdays and all day on weekends. In addition, students may be required to display their University photo ID during nursing examinations and other activities.

## Parking

Student parking facilities are provided at both campuses. Parking is on a first-come, first-serve basis for a fee payable each semester. Public safety personnel are available to escort students to their cars. When traveling between the Frost and Health Sciences Center Campuses, the Billiken shuttle service may be used. Billiken shuttle schedules are available at [Parking, IDs and Transportation at SLU](#). Students are advised not to use street parking.

## SLU Ride Program

Don't walk alone at night. Call 977-RIDE. A van escort, golf cart escort, or walking escort will be provided for those individuals traveling from one area of campus to another. The mode of transportation provided will be based on designation and availability.

## Campus Activities and Projects

### National Student Nurses Association

Students are urged to become members of the National Nursing Student Association, which is part of the State Association. The School of Nursing does have a constituent organization. Students will be made familiar with the Student Association when they begin the nursing sequence. Officers' names and addresses are posted on the bulletin board. Information about applications may be obtained from these officers. A schedule of meetings will be posted on the student bulletin board on the ground floor of the School of Nursing.

### Sigma, Global Nursing Excellence / Delta Lambda At Large

The Delta Lambda At Large Chapter of Sigma, Global Nursing Excellence, the honor society for nursing, was established at Saint Louis University in 1980. The chapter currently includes members inducted from Saint Louis University, Webster University, and community nursing leaders.

The mission of the Sigma, is advancing world health and celebrating nursing excellence in scholarship, leadership, and service: [Sigma Organizational Fact Sheet](#).

Students who have achieved superior scholastic achievement and meet the criteria below will be invited to join the honor society. Induction into Sigma Theta Tau is usually held in spring, close to commencement.

Membership Criteria:

#### Undergraduate Students

- Complete ½ of nursing curriculum
- Achieve academic excellence with GPA of 3.0 or higher
- Rank in the upper 35 percentile of the graduating class
- Meet the expectation of academic integrity

#### Graduate Students



Complete ¼ of the nursing curriculum  
 Achieve academic excellence with GPA of 3.5 or higher  
 Meet the expectation of academic integrity

### **Nurse Leaders**

Legally recognized to practice nursing in the United States  
 Have a minimum of baccalaureate degree or the equivalent in any field  
 Demonstrate achievement in nursing

*Reviewed and revised: 8/2022*

## **Student Representatives on Faculty Committees**

1. Are expected to attend all meetings or find an alternate to attend.
2. Are responsible for getting suggestions and comments from the student body in order to represent student thinking.
3. Must report back to their respective classmates either in a class meeting or through a written communication. This report may be sent to each student individually or posted where students meet for class or posted via e-mail.

## **Procedure for Selection**

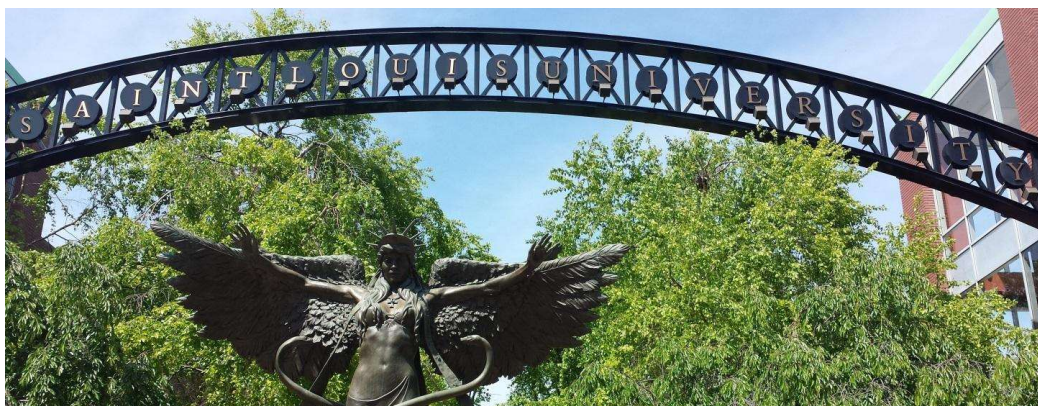
All students are informed via e-mail of committee vacancies and the dates of various meetings. A student who is interested and whose schedule permits may submit an expression of interest to the Associate Dean for Prelicensure and Undergraduate Education or the Committee chairperson.

## **Student Opinions**

Students are encouraged to actively participate in activities which affect their educational program in nursing by volunteering for faculty committee membership, attending faculty committee meetings as observers, and informing their student representatives of their suggestions and/or opinions. The philosophy of the School of Nursing states: “Nursing education is a collaborative endeavor of faculty and students in which each contributes and shares talents to enhance learning.”

In keeping with this belief about education, students have both the right and responsibility to discuss and explore issues affecting this education and to express their opinions. Therefore, students are encouraged to interact, in this spirit, with faculty and administration both formally through committees and classroom discussion and informal discussion. Student opinions and suggestions are valuable for curriculum and course revisions and, as such, are sincerely welcomed by faculty.





## Examinations

### Computer Requirements for School of Nursing: [Essential Information](#)

All students in the School of Nursing are required to have a laptop computer and certain accessories for secure testing. Students can have a Windows device or a Mac device, but it should meet the minimum specifications outlined below. **Specifications may change over time so students should have a device that they are able to use for the duration of their education.** Chromebooks are not supported. iPads can be used for some activities, but a computer is required for most testing purposes. The Trudy Busch Valentine School of Nursing uses ExamSoft, Canvas and ATI for testing purposes. All devices must meet the minimum system requirements of **both ExamSoft and ATI** products. Information regarding minimum system requirements can be found on each product website. The links are below. In addition to the product minimum system requirements all devices should have the following:

- All device operating systems require administrator-level rights/permissions.
- All devices require a working USB port. Newer devices may require an adapter.
- All devices must have a supported updated internet browser installed. Supported browsers: Chrome, Firefox, Microsoft Edge, Safari. Must have Chrome for remote testing.
- All devices require an Ethernet port (PC/Mac) or an Ethernet adapter appropriate for the device.
- An Ethernet cable is required for all devices.

[Minimum System Requirements for Examplify \(ExamSoft\)](#). Please note that the device should meet the requirements for ExamID and ExamMonitor in addition to the general minimum system requirements.

[Technical Requirements for ATI](#). Devices must meet the requirements for Proctored Assessments and Remote Proctoring in addition to the general minimum system requirements.

If minimum systems requirements are not met, students may borrow a laptop from the Medical Library if available. It is the student's responsibility to check out the device the day before the exam and return it to the Medical Library after taking the exam.



## Examination Policies:

1. Examinations will be administered at the scheduled dates and times (Central Time) as indicated on the course calendar. It is expected that students will uphold the principles of academic integrity while taking exams. These are NOT open book or group exams.
2. STUDENTS MUST TAKE ALL EXAMS AT THE SCHEDULED TIME. If a student is unable to take the test at the scheduled time, the student must notify the course coordinator PRIOR to the exam. Failure to provide proper PRIOR notification will result in 5-percentage point deduction.
3. It is the student's responsibility to contact (within 48 hours) and reschedule the exam with the instructor. The course coordinator reserves the right to administer an alternate format of the exam for a makeup. Students who are ill and present a valid healthcare practitioner's statement attesting to that illness, may reschedule the exam without penalty.
  - a Five (5) points will be deducted from the student's grade for each of the following infractions:
    - i Failure to provide proper prior notification.
    - ii Failure to reschedule exam within 48 hours.
    - iii Failure to take a rescheduled exam at the appointed time.
    - iv Failure to provide a valid health care statement attesting to illness.
4. Students using accommodations from CADR must notify the instructor of their accommodation prior to the exam date. These will be handled on an individual basis. Accommodations for extended time will be built into ExamSoft.
5. Cell phones, smart watches, and electronic devices must be turned off and not on your person.

## ExamSoft Policy:

Examinations will be administered using ExamSoft, Canvas or ATI. For exams using Examsoft the exams will be available to download approximately 24 hours before the scheduled exam time. It is the student's responsibility to download the exam at least 60 minutes prior to the scheduled exam time. Failure to download the exam (to your computer or iPad) during the allotted download window may result in a 5% reduction on the exam score earned. The exception to this is if a technology error results in the inability to download an exam. In this case, the student must contact the course coordinator by email no later than 30 minutes before the scheduled exam time identifying the error. The ExamSoft student support line should be contacted in the event of technology issues. Failure to inform the course coordinator of a technology issue 30 minutes prior to the exam may result in a 0% on the exam.

It is the student's responsibility to begin the exam with a working, fully charged computer. If, for some unexpected reason that is not possible (e.g. computer is stolen morning of exam), it is the student's responsibility to contact the course coordinator by email no later than 30 minutes before the scheduled exam time. Cases will be handled on an individual basis.

If your course will be utilizing online proctoring with ExamID and ExamMonitor through ExamSoft, you will be expected to make sure that your computer (PC or Mac) meets all the



minimum system requirements for proctoring. Prior to taking your first exam with proctoring enabled you will be expected to take a mock exam using ExamID and ExamMonitor. If you are unable to get ExamID and ExamMonitor to work on your device, you must notify your instructor and consult ExamSoft technical support for a resolution.

If the student accesses the exam at any time other than during a scheduled testing period, the student will receive an automatic 0% on the exam. Additionally, accessing the exam at a time other than scheduled is considered a violation of academic integrity and the academic integrity policy will be followed.

Approved: Undergraduate and Pre-Licensure Committee 8/17/23

### Medication Calculation Competency (MCC) Policy

The faculty at Saint Louis University School of Nursing (SLUSON) believes that the generalist nurse must be able to demonstrate the ability to calculate medication doses. This is consistent with the SLUSON end-of-program objectives, as well as our commitment to promoting and maintaining safe patient care. Therefore, the pre-licensure student must demonstrate proficiency at medication calculation before beginning clinical courses each semester. The student will be given three opportunities to achieve a 100% score on the MCC test. This ensures that the student is able to safely pass medications for the semester. Medication Calculation Competency certification is a prerequisite for clinical courses. This policy does not preclude specialty areas' medication calculation testing.

The content of the MCC test is approved by the Undergraduate and Pre-licensure Program Committee (UPPC). Any changes to the test plan or the testing procedure must be approved in advance by the UPPC. There are multiple versions of the MCC test; each version tests the same concepts.

Approved: Undergraduate and Pre-Licensure Committee 8/19/13

### Procedure

1. Medication calculation is taught in NURS 2520. Prior to beginning the required clinical experience in that course, the student must achieve 100% on the medication calculation exam. Students will have the opportunity to take the test up to 3 times in order to achieve the required 100%.
2. After successfully completing NURS 2520, students will be required to demonstrate medication calculation competence in each subsequent semester in which they are enrolled in the School of Nursing. The procedure for this will be as follows:
  - a. During the 1st week of class each semester, program level (e. g. junior level, senior level, accelerated option) faculty will arrange a day and time for the administration of the medication calculation exam.
  - b. Students will need to achieve 100% on the medication calculation exam in order to participate in patient care in any course that semester.
  - c. If 100% is not achieved on the first attempt, a subsequent attempt will be allowed outside of class time during the first week of the semester.
    - i. SON faculty member(s) will be assigned to oversee retesting and remediation.





- ii. Students are highly encouraged to use med calc education resources for their own remediation.
- d. After 2 unsuccessful attempts, the student must participate in a remediation plan. After proof the student has completed the remediation plan, the 3rd and final attempt will be allowed outside of class time during the 2nd week of the semester.
  - i. Students may attend scheduled clinicals, but not pass medications until the 3rd attempt is passed with 100%.
- e. Students who do not achieve 100% after three attempts will be unable to pass medications and therefore will be unable to fulfill clinical course objectives. Students who are unsuccessful after 3 attempts will be dropped from clinical courses in which they are registered.

*Approval Body: Undergraduate and Pre-Licensure Program Committee, Approved: 8/19/18*



## Clinical Requirements

### Competencies and Performance Standards Essential for Nursing Practice

A nursing student must possess certain physical and mental attributes in order to provide safe and effective client care. The following competencies have been identified as essential to practice safely, with or without reasonable accommodations.

#### ***Competencies and Performance Standards***

#### ***Examples (not all-inclusive)***

##### **Physical competence:**

Gross and fine motor skills, strength, mobility, and endurance sufficient to provide safe and effective nursing care.

Maneuver within confined spaces, move quickly, move and position clients, operate large and small equipment, lift objects up to 50 lbs., work entire 8-12 hr. shift.

##### **Sensory perception:**

Hearing, vision and tactile function sufficient to assess and monitor health status and provide a safe environment.

Hear alarms, hear blood pressure and heart sounds, observe client responses, read monitors and charts, feel body surface characteristics and pulses.

##### **Critical and analytical thinking:**

Critical and analytical thinking abilities sufficient for sound clinical judgment.

Identify cause-effect, synthesize knowledge, transfer knowledge, process information, prioritize, problem solve, plan, implement and evaluate nursing care.

##### **Emotional stability:**

Emotional stability sufficient to maintain accountability and responsibility in a high stress environment.

Adjust positively to stress/changing environment, keep attention focused, deal with unexpected, provide emotional support.

##### **Interpersonal skills:**

Interpersonal skills/abilities sufficient to interact positively with others.

Establish rapport with clients and colleagues, respect differences, negotiate conflicts.

##### **Communication skills:**

Communication abilities sufficient for interacting with others in verbal and written form.

Sharing information, teaching, explaining procedures, documenting, giving reports.



## The Uniform Policy

Some forms of dress or body adornment, while acceptable in social settings, interfere with developing an effective nurse-patient relationship. The following guidelines were established to assist in developing a professional appearance and to insure the safety of both the patient and the student.

### Guidelines for Uniforms and Equipment for Clinical Courses

Students are to dress in a professional manner whenever they are in a clinical agency, with patients, in the skills lab, or in the simulation lab. Uniforms/scrubs are not to be worn outside of lab or clinical experiences.

With the diversity of clinical agencies used by students for clinical experiences, acceptable uniforms may vary. Students should always follow instructions given by clinical instructors during orientation. Students may be dismissed from clinicals, lab, or simulations if the instructor deems attire is inappropriate.

### General Guidelines

1. All clothing must fit properly, be clean, pressed, and modest. Appropriate underwear must be worn. Underwear cannot be visible.
2. Navy blue scrubs are to be worn when caring for patients and when attending lab and simulations.
  - a. Navy blue scrub tops with the Saint Louis University School of Nursing logo embroidered must be purchased from Saint Louis University Barnes & Noble bookstore.
  - b. Long-sleeve t-shirts may be worn under the scrubs if they are solid white, gray, black, brown, or navy.
  - c. Navy blue scrub pants must be consistent with the styles purchased from Saint Louis University Barnes & Noble bookstore (straight leg or bootcut only).
  - d. Appropriate shoes must be worn with navy blue scrubs. The shoes will be closed toe, no mesh, neutral color (no neon), white, gray, black, brown or navy.
3. A white lab jacket with the Saint Louis University School of Nursing logo embroidered on it is to be worn over business casual clothes or SON uniform when going to health care areas to collect data, during observational experiences, and when identified as necessary by faculty. This lab jacket must be purchased from Saint Louis University Barnes & Noble bookstore.
4. Hairstyles should be clean and well groomed. Hairstyles should be simple, with hair secured away from the face. Hair color should be of a natural hue.
5. Facial hair should be neatly trimmed and may not interfere with the proper fit of personal protective equipment (PPE). Agency policies will be respected.
6. Jewelry:
  - a. Wearing expensive jewelry is not recommended.
  - b. Jewelry is to be limited to a wedding band or a ring with a flat setting.
  - c. Only one pair of small button-type earrings worn in the earlobes is permitted.
  - d. Necklaces and chains may be worn inside shirts.
  - e. Bracelets should not be worn.
7. Nails:
  - a. Nails must be kept clean, neat, well-manicured, and of a reasonable length.
  - b. Artificial nails may not be worn.



- c. Nail polish is not permitted.
- 8. Required equipment:
  - a. Waterproof watch with a second hand or a digital second display.
  - b. Stethoscope (dual headed model)
  - c. Bandage scissors
  - d. Penlight
  - e. Goggles/Safety glasses
  - f. Basic calculators with basic functions of add, subtract, multiply, and divide ONLY. A calculator with more advanced functions is not allowed.
  - g. Nursing bags purchased from the bookstore.
  - h. Sphygmomanometer (BP cuff) adult size
- 9. The Saint Louis University ID badge must be worn while in uniform. It is strongly encouraged that the student wears this ID badge whenever on campus.
- 10. No visible body piercings or tattoos are permitted.

*Approval Body: Undergraduate and Prelicensure Program Committee*

*Approved: 12/14/2006*

*Revised and Approved: 1/17/2008; 1/20/2010; 1/15/2015*

## CastleBranch

Castlebranch (<https://portal.castlebranch.com/IH81>) is the online clinical and healthcare requirement tracking system used by the School of Nursing. Students are required to set up an account in Castlebranch and upload the appropriate documentation and required forms prior to starting clinical rotations. Castlebranch accounts will be reviewed by School of Nursing faculty or staff prior to each clinical rotation and students will be ineligible for clinical experiences if their accounts are not in compliance.

## Immunization and Screening Requirements

All immunization items should be uploaded to your CastleBranch Account. Please note that you may need to submit items separately to Student Health with SLU as they do not have access to your CastleBranch account. If you are accepted as a JR Entry from the TBSN program to the ABSN program, we will also be able to transfer your CastleBranch account for you.

1. [Diphtheria, Tetanus and Pertussis](#) Documentation of a primary series of diphtheria, tetanus and pertussis toxoid(DTaP), one (1) TDaP, then Td booster every ten years.
2. [Measles, Mumps and Rubella](#) Documentation of 2 immunizations (at least 4 weeks apart) OR positive surface antibody titers (IgG).
3. [Varicella \(Chicken Pox\)](#) Documentation of 2 immunizations(at least 4 weeks apart) OR positive surface antibody titer (IgG) for varicella.
4. [Hepatitis B](#) Evidence of three Hepatitis B vaccinations AND a positive surface antibody titer (IgG). If titer is negative, repeat the series of 3 immunizations then repeat titer 1-2 months after re-immunization the third vaccine.
5. [Tuberculosis Screening](#) Documentation of a negative IGRA test (QuantiFERON Gold or T-SPOT) within 12 months of the beginning of each clinical. A previous positive TB skin or positive IGRA test requires a separate physician statement documenting treatment and/or absence of active/infectious tuberculosis. Additional testing may be required based on clinical facility requirements during clinical placements.
6. [Influenza](#) Annual influenza immunization is required in the fall semester for all students who are in or will be participating in clinical during the flu season (October through May).



7. Policies related to [COVID-19](#):
  - a. Please refer to the University website for University COVID-19 information.
    - i. [SLU COVID-19 Safeguards](#)

*Reviewed and updated: June 2020; July 2021*

## CPR Requirement

All students are required to be certified by the American Heart Association at the Basic Life Support for Healthcare Providers level for infants, children and adults and to maintain the certification throughout their clinical courses. Certification must be completed prior to the 1<sup>st</sup> day of the first clinical of the semester or registration will be canceled. Late registration fees will be incurred. This will be tracked through your Castle Branch Account.

## In case of emergency (ICE) contact

It is required by SON to maintain an ICE contact on each student. This document will be housed with the student handbook acknowledgement in your CastleBranch account and is to be updated each year as a new handbook is released. A limited number of administrators have access to your CastleBranch data. If there is an emergency or if there has been a prolonged and unexplained absence from SLUSON, this information will be used to ensure your safety.

## Evidence of Health Insurance

Each year, the School of Nursing must obtain evidence of health insurance from each student prior to that student's assignment at a facility. This will be tracked through your Castle Branch Account.

## Background Check and Drug Screen

In order to promote a safe healthcare environment and meet program's standards and requirements of the University, School of Nursing and clinical affiliates, pre-licensure students are required to have a background check and drug screen prior to any clinical experience. The clinical agency maintains the right to deny a student access to nursing practice if a background check or drug screen is positive. In such cases, the inability to place a student in a clinical agency would prevent the student from completing the program. Costs of the background check and drug screen are borne by the student. The student must sign a statement allowing the School of Nursing to release background check and drug screen results at the request of the institution as a requirement of clinical placement. All information will be maintained in strict confidence by the School of Nursing. The background check and drug screening will be done through the student's Castlebranch account.

*Reviewed: August 2017; July 2021*

## Drug Screening Policy

The School of Nursing is committed to maintaining a safe, healthful, and efficient learning environment, which enhances the welfare of our employees, students, patients, and visitors. We therefore strictly prohibit the use of illegal substances by our students. This concurs with the University's Drug and Alcohol abuse prevention policies that govern the actions of both its students and employees.



While Saint Louis University does not require drug testing of their students, an increasing number of our clinical affiliates do as a matter of individual institutional policy.

Therefore, in accord with the university's position on drug abuse and as a direct result of certain individual institutional policies of our clinical affiliates, any School of Nursing students whose curriculum and clinical placement mandates, such are required to undergo drug screening prior to being assigned to their clinical rotations.

Initial drug screening will be completed via the student's CastleBranch account. Students will be responsible for any charges related to the drug screen. If the screening test results are not conclusive, then the student's specimen sample must be sent to another facility for additional testing (i.e. confirmatory laboratory testing).

The confirmatory test may result in the student being contacted by an independent physician, Medical Review Officer (MRO), who has been charged with interpreting test results. This would be the appropriate time for the student to produce documentation of current prescription medication that could influence the test results. This contact will not occur in all cases but students should be aware it is a possibility and should be ready to supply additional information if requested at that time. Students are not required to disclose information related to prescribed medicine to the School of Nursing faculty or staff.

*A single negative drug screen does not preclude the requirement of additional screens at future clinical placements. The need for additional drug screens will be based on clinical affiliate requirements. Any student removed from a clinical affiliation based on the results of a drug screen will be subject to the process outlined in this policy.*

The current procedure for School of Nursing students needing to obtain a drug screen is as follows:

1. Students will obtain initial drug screening through their Castlebranch account. All drug testing results must be submitted prior to the first clinical experience.
2. Students who are subject to repeat drug screens will fill out an authorization form at the program level for the release of student information. This will include the release of their name and school to student health for drug screening and the release of screen results if required by clinical affiliates. For repeat drug screens, students must go to the Student Health Services at Marchetti Towers (East) with their SLU picture identification badge. Screening tests will be performed on site.
3. Students fill out required student health paperwork and provide a urine sample on site for testing. If confirmatory testing is not required (i.e. the sample is clearly negative in the screening procedure), a negative report will be sent to a confidential fax located in the School of Nursing for all nursing students. Subsequently the report will be sent to the appropriate option coordinator. No further action is required.
4. If confirmatory laboratory testing is required (i.e. the test site requires additional clarification), the sample is sent to an independent laboratory. This will require 48 to 72 hours to obtain the results and may require that the student be contacted for additional information by the MRO charged with interpreting the confirmatory test. This may require students to produce documentation of prescription medication that could influence the test results. **The student must respond to the MRO in a timely manner (within 5 days of the MRO's inquiry) or the test will be reported as positive.** The lab confirmatory test will



have an additional charge. If this confirmatory test is reported to the school as negative, no further action is required.

5. If the lab confirmatory test is positive, the Associate Dean will receive a copy of the report. Student Health will then directly refer the student to Counseling Services for an evaluation and a treatment plan will be outlined. Implementation and follow through on the treatment plan are required, including signing all requested consent forms and releases. Failure to fully comply with the treatment plan will be reported to the student's Associate Dean. **Any student with a positive drug screen will be subject to a delay in clinical placement and face the potential for ultimate dismissal from the program.**
6. Upon receiving the results of the counseling evaluation and treatment plan, the Associate Dean will decide if a student may continue in the program. Students judged eligible to continue in the program will be required to submit to another drug test. This test must be negative or the student is subject to immediate dismissal from the program. Any student that has tested positive for illegal drugs may be subject to a random drug screen at any time during the remainder of their academic career at Saint Louis University.
7. Any student dismissed as a result of this policy has a right to appeal. The appeal will follow the guidelines and procedures outlined in this handbook.
8. For additional information on the drug screening policy, please contact the faculty member who coordinates field experiences ([Carolyn.Layloff@slu.edu](mailto:Carolyn.Layloff@slu.edu)).

Reviewed: May 2005; May 2018; May 2019

## RN to BSN Practice Experience Requirements

Given the limited nature of the RN to BSN practice experiences, RN to BSN students must complete or provide documentation of the following requirements prior to starting the community project. All requirements must be submitted to your CastleBranch account.

1. Authorization to release information to the clinical site.
2. Validation of knowledge regarding exposure to blood-borne pathogens.
3. SLU Health Insurance and Portability and Accountability Act (HIPAA) compliance training.
4. Evidence of current influenza vaccination, tetanus, diphtheria, and pertussis (Tdap) vaccination, and tuberculosis QuantiFERON Gold screening.
5. Evidence of current in-person American Heart Association for the Healthcare Provider CPR certification.
6. Required SLU Student Health forms.
7. SLU's Comprehensive Criminal Background Check and Drug Screen.
8. Proof of health insurance.
9. Hold an unencumbered RN license in the state for which they practice and where they will be completing their community project.
10. Policies related to COVID-19:
  - a. Please refer to the University website for University COVID-19 information.
    - i. [SLU COVID-19 Safeguards](#)

## Documentation and Enforcement

Undergraduate and Pre-licensure students must document compliance with these health care requirements prior to enrolling in the first nursing clinical or laboratory course. Failure to do so will result in the administrative cancellation of student's registration in the nursing courses. Late registration fees will also be incurred.



## Health Care and Student Services

### Center for Accessibility and Disability Resources (CADR)

Full information on SLU's policy can be found utilizing the following links:

[Center for Accessibility and Disability Resources : SLU](#)

Students who wish to request academic accommodations **must** contact CADR to discuss accommodation requests and eligibility requirements. Once successfully registered, the student also **must** notify the course instructor that they wish to access accommodations in the course.

**You are responsible for discussing your accommodations with your instructors so that they are able to accommodate your specific needs in that class.** You are not required to disclose the nature of your accessibility or disability need, only your approved accommodations. If you hope to use your approved accommodations for a class, it is best to discuss your needs with your professor at the beginning of the semester and regularly communicate about any adjustments that may need to be made.

Confidentiality will be observed in all inquiries. Once approved, information about a student's eligibility for academic accommodations will be shared with course instructors by email from CADR and within the instructor's official course roster. Students who do not have a documented accessibility or disability needs but who think they may have one also are encouraged to contact CADR:

Busch Student Center, Suite 331  
[accessibility\\_disability@slu.edu](mailto:accessibility_disability@slu.edu)  
 314-977-3484

### Health Services

The Student Health Services for the University are located on the ground floor of Marchetti Towers East, 3518 Laclede. The telephone number is (314) 977-2323.

### Change in Health Status

If a student is/or becomes pregnant, is injured, or ill this information should be shared with the student's clinical faculty prior to beginning clinical if possible. Please review the competency and performance standards essential for nursing practice on page 35. If you become pregnant, are injured or ill while enrolled in a clinical course, a letter must be obtained from the physician regarding any limitation of activity. This information will aid in planning and appropriate scheduling. The assigned clinical instructor will be responsible for discussing with the student the various risks involved (i.e. exposure to radiation and measles.)





## Acquired Immune Deficiency Syndrome (AIDS), Human Immunodeficiency Virus (HIV) and other Infectious Diseases:

Consistent with the School of Nursing philosophy that all persons have dignity and worth, School of Nursing faculty will include individuals who have AIDS, HIV, or other infectious diseases in their consideration of patients/clients for learning assignments, which are consistent with specific course objectives. In turn, School of Nursing students will accept learning assignments with patients/clients who have AIDS, HIV, and other infectious diseases unless such assignment would not be compatible with the student's health condition, e.g., pregnancy, immunosuppressant. Similarly, in their University roles, faculty members, students, and staff members will not discriminate against persons who are known to have or are suspected of having AIDS, HIV, or other infectious diseases.

Prior to the first learning experience with a patient/client in each course, the faculty member will ascertain that each student has the knowledge necessary to practice infection control management, as required for assignments related to general or specific patient care.

Please refer to the University website for University COVID-19 information: [SLU COVID-19 Safeguards](#)

## Report of an Injury or Illness

If an injury should occur during a student's clinical shift, the student MUST report it to the clinical instructor who will assist the student in completing an incident report at the agency (if required) and School of Nursing (The SON Business manager). This must be completed within 48 hours of the incident. If medical care is necessary for either injury or illness, it must be arranged through the student's individual medical insurance plan. Students maintain the right to seek medical treatment from the provider of their choice, but any expenses incurred will be borne SOLELY by the student. The School of Nursing cannot be responsible for the cost of any medical or health provider care.

A student may be unable to participate fully in a clinical activity due to illness, injury or pregnancy. Documentation from their health care provider that states it is safe to return to clinical practice must be submitted to the clinical instructor and course coordinator prior to their return to clinical practice.

## Policies/ Procedures in the Clarke Skills Lab

### Signing out Equipment from the Clarke Skills Lab

Equipment is available to check-out for student use while they are enrolled in Saint Louis University School of Nursing using the following procedure:

1. Faculty/Students must request to check-out equipment.
2. Faculty/Students will obtain equipment directly from a lab staff member.
3. A "check-out" form will be completed by the person responsible for the equipment. This must include the person's name, e-mail address, phone number, and expected date to return the item.
4. The lab staff will keep a current record of checked-out equipment.



5. Equipment must be returned in a timely fashion preferably within 48 hours.
6. Equipment must be returned directly to a lab staff member. It may NOT just be placed on a counter in the lab.
7. Faculty/Students will be responsible for replacing or paying for any checked-out equipment that is damaged or lost. Failure to do so will result in grades being held until the situation is resolved.

## Blood and Body Fluid Precautions

1. No student will be allowed to practice or perform any invasive procedure in the Clarke Skills lab without a faculty member present.
2. Non-latex gloves are available at all times for use during practice, demonstration, and check-off procedures for skills and physical assessment.
3. Students are taught proper use of gowns, masks, goggles, and gloves to prevent exposure to blood and body substances.
4. Students practice dressing and other skills on manikins with simulated wounds.
5. CPR manikins or any item used for ventilation is cleaned and disinfected after use. Disposable masks or plastic barriers are used when practicing CPR. One-way valves are used in masks and replaced after use.
6. **NEEDLE USE AND DISPOSAL:** Immediately after you use a sharp, engage any safety feature, and place it in a sharps disposal container that is closable, puncture-resistant, leakproof on the sides and bottom, and biohazard-labeled or color-coded.
7. Do not remove, recap, break, or bend contaminated needles or separate contaminated needles from syringes before discarding them into a sharps disposal container as this increases the risk of a needlestick injury and a bloodborne pathogen exposure. Best practice is to immediately place the connected needle and syringe into the sharps disposal container.
8. When performing invasive procedures on a human subject, students must wear gloves. After completion of a procedure, sharps are placed in appropriate containers. Any article containing blood, i.e. alcohol wipes, cotton balls, test strips, are disposed of by placing the item in one gloved hand, pulling the glove over the item and placing the entire contents into the second gloved hand. The second glove is pulled over the first glove, enclosing all contents. This package is then disposed of in a plastic lined trash container.
9. Disposal of contaminated materials is carried out according to OSHA standards and Saint Louis University Health Science Center policies for hazardous waste.
10. Any non-disposable equipment subject to contamination will be cleansed and disinfected using one part bleach to nine parts water, and/or an alternatively approved solution, for ten minutes.
11. All students must complete CareLearning modules prior to attending clinical experiences.



## Procedure for Reporting Student Exposure to Blood-Borne Pathogens OR Incident Report (For Campus-Based Students)

Exposure to blood-borne pathogens or injury requires completing **Report of Injury form** from SLU Risk Management and the Business Office in the School of Nursing.

- The Report of Injury form must be sent to the Business Manager who in turn will send the form to Risk Management.

The forms can be obtained from the School of Nursing Business Office during normal business hours (8:00 a.m. – 5:00 p.m.), from the back of this SON STUDENT HANDBOOK, from the School of Nursing Faculty and Staff Manual (SON portal), or the UPPC universe site.

### Procedure:

- 1) Students who sustain an injury or exposure should report to their clinical leader, the director/manager of the clinical site, and supervising SLU faculty, to notify them of injury/needle stick as soon as possible. School of Medicine MD-seeking students should ensure the Office of Student Affairs is notified.
- 2) The Non-Employee Injury Form should be completed within 48 hours of the incident and email to [riskmgmt@slu.edu](mailto:riskmgmt@slu.edu)  
<https://www.slu.edu/facilities/risk-management-insurance/nonemployeeinjuryform.pdf>
- 3) Students should first follow protocol of the clinical location for initial laboratory workup, source testing, treatment, and/or imaging.
- 4) If clinical site does not have an affiliated Emergency Department (ED) or Employee Health, student should go through SSM-Saint Louis University Hospital (SLUH) ED. If clinical site is out of state or not within reasonable distance to SLUH, student should go to nearest ED and follow their protocol for blood borne pathogen exposure and/or traumatic injury work up including but not limited to imaging recommendations.
- 5) Nonclinical/research students should report to SLUH ED. If clinical research is being done in a different state or beyond a reasonable distance to SLUH, students should proceed to nearest ED and guidelines followed according to their protocol for blood borne pathogen exposure and/or traumatic injury work up including but not limited to imaging recommendations.
- 6) If a traumatic injury or exposure occurs and assistance is not sought immediately following injury, the student can come to Student Health Center (SHC) for work up if not in immediate urgent distress. Student will be assessed by Registered Nurse (RN) to first determine emergent need and will make recommendations based on this assessment (ED vs SHC)
- 7) All follow up laboratory work and imaging can be managed through SHC and recommendations from the initial evaluating site will be followed if available, if not, standard protocol will be followed.



8) Students and source patients are required to obtain their own transportation to the testing/treatment site, if emergency transportation is not required. Students may utilize DPS for transportation if the incident occurred on Saint Louis University campus and treatment is sought at SLUH or SHC.

9) Any student medical expenses incurred related to the incident will be the responsibility of the student and/or the student's health insurance plan. Expense assistance may be available at the discretion of the individual department or school.

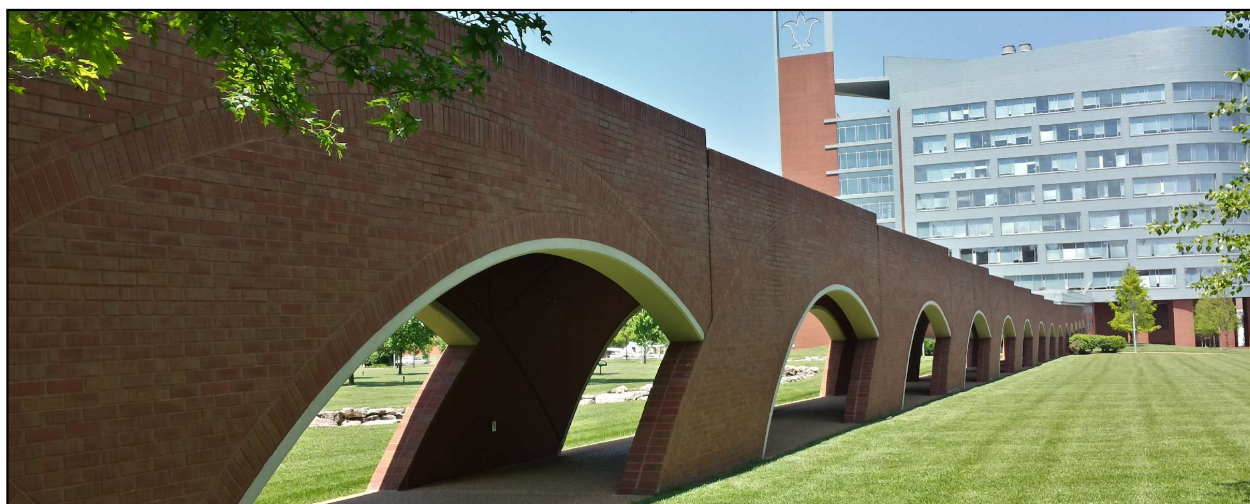
*Reviewed by Administrative Council 8/19/13; 8/18/15; 8/19/22; 9/12/22, 5/8/23*



Higher Purpose. Greater Good.™







## Grading Policies

The following grading scale applies to all courses in the nursing major:

A	93-100	4.0
A-	91-92	3.7
B+	89-90	3.3
B	85-88	3.0
B-	83-84	2.7
C+	80-82	2.3
C	77-79	2.0
C-	75-76	1.7
D	70-74	1.0
F	69 and below	0.0

## Progression Policies

**A grade of C- or better is required for all prerequisite, required and Interprofessional Education (IPE) courses. A grade of C or better is required in nursing courses to complete the degree.**

**Required courses (including IPE) may be repeated only one time whether repetition is due to withdrawal or academic failure.** For courses that have both theory and clinical components, 80% of the grade is earned from testing, 20% of the grade is earned from clinical assignments unless otherwise noted in the syllabus. The percentage of clinical points earned will be added to the student's grade only if a 77% test average is attained.

In addition students must satisfactorily fulfill clinical objectives and/or laboratory objectives to satisfactorily complete nursing courses with a clinical component.

Progression from one course to another is contingent upon successful completion of each prerequisite course.



## Probationary Status

### Academic Probation

Students in the traditional option must maintain a cumulative grade point average of 2.5. A student who fails to meet the required grade point average may be granted probationary status to provide the opportunity to:

1. Improve scholastically.
2. Show evidence of the capacity to successfully complete a baccalaureate degree in nursing.

While on academic probation, the APG committee may restrict the number of credit hours and the kinds of courses that may be taken. The sanction of probationary status is invoked for a period of at least one full time semester and not more than two full time semesters. The Associate Dean will give students on academic probation written notification of their status in the nursing program. Probationary letters remain in the student's academic file.

### Performance Improvement Plans (PIP)

All students at the School of Nursing must demonstrate professional behavior considered acceptable for both study and a career in nursing. Students are subject to performance improvement plans under the following conditions:

1. Failure to demonstrate consistently the personal and professional attributes considered by the faculty as necessary for continuance in the nursing program.
2. Failure to demonstrate consistent improvement in clinical performance as specified in the course objectives.
3. Earning a final rating of "needs improvement" in any clinical course objective.

Students who are placed on a performance improvement plan will receive a written contract which details the behaviors that must be demonstrated to meet the terms of plan. PIP will remain in the student's academic file until graduation. Students who are placed on performance improvement plans during, or at the end of, one clinical course have the duration of the subsequent clinical course to meet the terms of the agreement. Failure to meet the terms by midterms as specified in that subsequent clinical course will result in a clinical failure for that course.

### Clinical Failure

Clinical failure is based on the behavior of the student in the clinical area in relation to the course objectives including professional behavior. Reasons for clinical failure include but are not limited to the following:

1. Earning a final rating of unsatisfactory in any clinical course objective.
2. Consistently coming to the clinical setting unprepared.
3. Repeated tardiness or unexcused absence on the clinical day.
4. Acts of dishonesty.
5. Providing unsafe care.



## Dismissal

Students are subject to dismissal from the School of Nursing for academic or professional reasons under any of the following conditions:

1. Failure to attain a cumulative grade point average of at least 2.50 after two consecutive semesters.
2. Being placed on clinical probation for a second time.
3. Being unsuccessful in two or more required courses during the course of study. “Unsuccessful” is defined as:
  - i. A grade of less than C- in any required or (IPE) course.
  - ii. A grade less than C in a nursing course (including elective).
  - iii. Withdrawing from a required [nursing](#) or [science](#) course for academic reasons (withdrawing for non-academic reasons must be substantiated by appropriate documentation).
  - iv. Any combination of the above three.
4. Consistently exhibiting behavior considered unacceptable for both study and a career in nursing.
5. Failure to remove or successfully resolve clinical probation status.

Students, who are dismissed from the School of Nursing and wish to appeal their dismissal, must submit a letter requesting review by the Admission, Progression and Graduation (APG) Committee within 5 business days of the receipt of the dismissal letter. (See section on “Appealing a Grade, Probation or Dismissal”). Students will have the opportunity to present their cases to the committee. Decisions of the APG Committee are final and may only be appealed as described in this handbook.

Students who are dismissed from the School of Nursing may apply for transfer to another school within SLU. They are subject to the transferring department's rules and regulations.

## Appeal of an Academic Decision

E.g. Course grade, clinical probation, etc.

A grade may be appealed only if there is evidence of capricious or arbitrary grading, abuse of discretion or lack of due process. An appeal gives the student the opportunity to present evidence that the assigned grade was capricious and/or arbitrary; there was abuse of discretion; or there was a lack of due process.

If a student believes the above is true, the student must:

1. Appeal to the faculty member who assigned the grade.
2. Appeal beyond the faculty member is to be made to the course coordinator. The student meets with the course coordinator with supporting evidence.
3. If a resolution is not obtained, the student contacts the appropriate option coordinator.
4. If a resolution is not obtained, the student contacts the Associate Dean of Undergraduate and Pre-licensure Education.
5. If resolution is not obtained, the student can appeal to the Admissions, Progression and Graduation Committee (APG). *See below for specific procedures.*

It is the responsibility of the APG committee Chair to communicate the Committee’s appeal decision to the student. The option coordinator, faculty mentor/advisor, and the appropriate administrator of the student’s program are also informed of the decision and are responsible for follow up.





## Appeal of a Program Dismissal

A student has the right to appeal a program dismissal. The appeal process gives the student the opportunity to explain extenuating circumstances or conditions, which adversely affected their behavior or academic performance. The student must present plans for preventing future problems if the requested reinstatement is granted.

The appeal is heard by the School of Nursing APG Committee. The Committee makes the decision to grant or deny the student's appeal. It is the responsibility of the Chair of the APG Committee to communicate the Committee's decision to the student. The Option Coordinator of the student's program is also promptly informed of the committee's decision on the student's appeal and is responsible for follow-up with the student.

## Admission, Progression, and Graduation Committee Procedures

Following posting of course grades, **the appropriate SON administrator** identifies those students who have not met all curricular and academic requirements as described in the respective program student handbook and/or catalog.

The **appropriate SON administrator** communicates in writing to the student(s) notifying them concerning their status in the School of Nursing. The letter will explain the specific issue and the appeal process (Reference Appendix A). A copy of the letter is sent to the student's mentor and/or advisor and the APG chairperson. The student must acknowledge receipt of the notification in writing.

When a student chooses to appeal, a request must be made in writing to the appropriate APG Committee Chairperson. The request must be made within 5 business days following receipt of written notification communicating the academic issue.

The appeal letter should, at a minimum, include the following:

1. A concise statement of the purpose of the appeal;
2. A description of the relevant circumstances that may have influenced the student's academic performance;
3. The student's plan for future success.

A hearing is scheduled based on the availability of a majority of the committee members. The **administrator** of the student's program will not be a voting member of the hearing committee. If a committee member(s) believes they cannot fairly review the evidence and render a decision, the committee member should recuse himself or herself from the meeting.

The student is provided with a list of the committee members prior to the scheduled appeal. At the student's request, the APG Committee Chairperson will make a substitution of **one** committee member, which may include the APG Committee Chairperson, if the student believes that the committee member may not render an impartial decision.

The student is encouraged to attend the hearing meeting of the APG Committee. If the student is unable to attend the meeting in person, the student may arrange to have a conference phone meeting with the committee. The student is responsible for informing the APG Committee



Chairperson whether they are attending the meeting in person, meeting via a telephone conference call, or not attending the meeting at all. If the student will be attending the meeting either in person or via a conference call, the Committee Chairperson will discuss the hearing process with the student prior to the hearing.

A student may submit a written request to the APG Committee Chairperson requesting that they would like to be accompanied by one person at the hearing. The person may attend the meeting and speak to the petitioner, but is not allowed to address the committee. If the designated person is an attorney, disclosure must be provided. The designated person may not be a student in the same academic program. Recording of the committee hearing is not permitted.

Prior to the APG Committee hearing, the Committee Chairperson will contact the student's faculty mentor and /or advisor and the faculty involved in courses pertinent to the appeal inviting them to provide germane information regarding the student's appeal. Information from the mentor and faculty must be submitted to the APG Committee Chairperson in writing prior to the hearing.

No later than the day of the hearing, the Committee members are provided with a copy of the student's appeal letter and the completed APG Committee Summary Form (reference Appendix A). The appropriate SON administrator may provide information related to any previous academic issues.

The hearing will proceed as follows:

1. APG Committee Chairperson describes the academic eligibility issue including a review of the applicable policy and pertinent background information.
2. Faculty member(s) may be invited to provide information to the committee.
3. The student joins the hearing and an introduction is made of all those present.
4. The student will make a statement to the committee.
5. The committee members will ask the student questions germane to the issue.
6. The student will make a final statement to the committee, and then be excused from the meeting room.
7. The committee will discuss the issue in a private session and make a majority decision regarding the appeal. *The Committee Chairperson will vote only in case of a split decision.*
8. If the appeal is granted, the committee will list detailed conditions regarding progression.

The mandated conditions listed by the committee will be documented on the confidential Progression Committee Summary Form. This form will be kept in an APG Committee file in the appropriate Associate Dean's office until the student graduates or three years from the date of appeal. Minutes of each meeting will be maintained.

The decision regarding the student's appeal will be communicated to the student by the APG Chairperson via the student's SLU email within 24 hours of the Committee meeting. Within five business days, an official letter will be sent to the student via their SLU email address. If the appeal is granted, the decision will be stated, as appropriate, in the letter. A copy of the letter will be sent to the **appropriate SON administrators** and the appropriate University department(s). A copy of the letter will be placed in the student's file.



If the appeal is denied, the student can file an academic grievance with the Dean of the School of Nursing.

## Legal Sanctions

Specific acts under which students are subject to sanctions are outlined in detail in the Saint Louis University Student Handbook. See the Office of Student Responsibilities and Community Standards website for a copy of the handbook and additional information about student responsibilities and standards at [Student Responsibility and Community Standards : SLU](#).

## Leaving the Nursing Program

Students transferring to another program in the University or withdrawing from the University should meet with their professional advisor and/or the appropriate Option Coordinator to facilitate a smooth transition. Students may be surveyed on exit regarding their experiences in the nursing program.



## Additional Policies and Regulations

### Dean's List

Full-time students in the School of Nursing who earn a GPA of 3.7 in a given semester will be named to the Dean's List. Each student will receive a letter of recognition from the Associate Dean. The Office of the Registrar will note the Dean's List designation on the official transcript.

### Faculty

Students evaluate individual faculty performance each semester. These evaluations contribute to the faculty members' annual performance appraisal. For promotion in rank, students evaluate each instructor, and these evaluations are submitted to the University Committee on Faculty Rank and Tenure.

### Course Evaluation

Students complete a summative evaluation of each nursing course. Clinical agencies, teaching methodology and effectiveness are also evaluated. We utilize a third party system called eXplorance Blue. More information can be found at [Blue Course Evaluations : SLU](#). Please email questions or issues to [courseeval@slu.edu](mailto:courseeval@slu.edu) for assistance.

### Missouri Nurse Practice Act 335.066

Students must have successfully completed the prescribed course of study as required by the Saint Louis University School of Nursing in order to apply to take the NCLEX-RN for licensure. Application to sit for the exam in Missouri will include fingerprinting and a criminal background check. Students may view the Missouri Nurse Practice Act at the [Board of Nursing](#).



Applicants should be aware that completion of the program of study does not guarantee eligibility to take the licensure examination and that the Missouri State Board of Nursing may refuse to issue a nursing license for the following causes:

1. The board may refuse to issue any certificate of registration or authority, permit or license required pursuant to Sections 335.011 to 335.096 for one or any combination of causes stated in subsection 2 of this section. The board shall notify the applicant in writing of the reasons for the refusal and shall advise the applicant of his rights to file a complaint with the administrative hearing commission as provided by chapter 621 RSMo.
  - A. Violation of the drug laws or rules and regulations of this state, any other state, or the federal government.
  - B. Placement on an employee disqualification list or other related restriction or finding pertaining to employment within a health-related profession issued by any state or federal government or agency following final disposition by such state or federal government or agency.

The Missouri State Board of Nursing has adopted the following rule:

An applicant for licensure by examination who answers yes to one or more of the questions on the application which relate to possible grounds for denial of licensure under section 335.066, RSMo, shall submit copies of appropriate documents related to that answer before his/her application will be considered complete. The copies shall be certified if they are records of a court or administrative government agency.

This means that, in addition to the separate notarized statement, the applicant must provide the State Board of Nursing office with supporting documents. This information need not accompany the application, but must be provided before a decision can be made regarding eligibility to take the licensure examination.

Examples of court documents related to a conviction or convictions could be Information Complaint or Indictment Sheets, the Judgment or other documents showing disposition of the case. This can also be referred to as the Order of Probation. The court documents MUST BE CERTIFIED.

### Professional Liability

Students at Saint Louis University Health Sciences Center are covered by the voluntary professional liability program begun in 1976. Under this program, Saint Louis University, subject to the provisions and limitations of a Letter of Indemnity, heretofore executed by the University setting forth the terms of the program, will pay “all sums those protected may become legally obligated to pay as compensatory damages because of injury or death to any person arising out of the rendering of or failure to render health care services.”

This protection is provided under this agreement to any student performing health services without remuneration, on or off the University premises, upon recommendation of the Dean of the School of Nursing or other designate. In other words, this protection applies under the terms of this agreement only when performing health services under the supervision of a faculty



member as part of specific course requirements in the School of Nursing. The student must be registered for the class to be covered by the liability program.

This protection does not apply to injury or damage resulting from the acts or omissions of a student while intoxicated, under the improper influence of drugs or narcotics, engaged in a criminal act, or willfully or intentionally causing harm.

Upon becoming aware of any alleged incident to which this protection applies, written notice containing detailed information should be forwarded to the Dean of the School of Nursing's Office.

The extent of annual protection provided to students shall be \$2,000,000 per occurrence per student with a maximum annual total of \$2,000,000 per student. The annual limit of financial liability of Saint Louis University for all claims shall not exceed \$6,000,000. A complete copy of the letter of indemnity may be examined in the Dean's office.

## Client's Right to Privacy

The nurse safeguards the client's right to privacy by judiciously protecting information of a confidential nature. An accompanying interpretive statement elaborates:

The right of privacy is an inalienable right of all persons, and the nurse has a clear obligation to safeguard any confidential information about the client acquired from any source. The nurse-client relationship is built on trust. This relationship could be destroyed and the client's welfare and reputation jeopardized by injudicious disclosure of information provided in confidence. Since the concept of confidentiality has legal as well as ethical implications, an inappropriate breach of confidentiality may also expose the nurse to liability.

Students are expected, without exception, to observe the patient's right to privacy. Students are required to complete the HIPAA training in order to participate in clinical studies. Sharing client information via any means, including electronic media is considered a breach of confidentiality. Failure to comply with this policy will result in serious consequences.

## Transportation of Patients

Students are not to transport patients as a part of the educational experience. If a student does transport a patient, the School does not assume responsibility.

## Examination of Records by Students

Students desiring to examine unofficial academic records maintained in the School of Nursing shall make a written request to the Associate Dean. The student will then be advised as to the time and place the record can be viewed.

## Tobacco Policy

This policy applies to all members of the SLU community, including students, faculty, staff, patients, contractors, and visitors to campus.

For the purpose of this policy, "tobacco" is defined to include, but not be limited to, any lit cigarette, cigar, pipe, bidis, clove cigarette, e-cigarettes, any other smoking product; smokeless



or spit tobacco, also known as dip, chew, snuff, or snus in any form; and any other tobacco product or device not approved by the FDA for the strict purpose of tobacco cessation.

The use, distribution, or sale of tobacco, including any smoking device, or carrying any lit smoking instrument, in University owned, leased, or occupied facilities or on University leased, owned, or occupied property, at events on University Properties, or in University-owned, rented or leased vehicles, is prohibited. This includes:

- All campuses,
- Parking facilities and lots (including in personal vehicles);
- SLU buildings located near city/municipality owned sidewalks, within 25 feet of entryways or exits, near air intakes, or near fire/explosion hazards;
- Off-campus housing managed by SLU;
- All university housing managed by SLU; and
- Hotels and other establishments operated by SLU.

For additional information about this policy see: [SLU Tobacco Free Policy Overview](#)

*Approval Body: President's Coordinating Council (PCC), Approved: May 7, 2015, Effective Date: July 1, 2016*





## Graduation

### Degree Application

Deadlines for applying for a degree on the next graduation date are noted in the University Academic Calendar. Application is made according to the direction of the Registrar's Office and all candidates must complete a graduate survey as part of the application process. Degree conferral dates for the University are in March, May, June, July, August, October, and December and commencement ceremonies are held in May and December.

### Graduation Requirements

Graduation requirements are as follows:

- o Completion of all program requirements.
- o Cumulative grade point average of 2.5.
- o 30 of the final 36 credits must be completed through Saint Louis University or an approved Study Abroad program.
- o Students must file an application to graduate before the end of the add/drop period of the semester in which graduation is intended.

### Graduation with Honors

Students receiving a baccalaureate degree must have completed 60 semester hours in residence at Saint Louis University in order to be eligible to graduate with honors. Graduation honors will be awarded by the University as follows: Cum laude for a grade point average of 3.500-3.699; Magna cum laude for a grade point average of 3.7-3.899; Summa cum laude for a grade point average of 3.900-4.00.

### Assessment and Achievement Examinations

Throughout the nursing curriculum students are required to complete surveys and examinations to measure levels of performance related to specific outcomes of the curriculum. Prior to program completion, pre-licensure students must take a comprehensive nursing examination. Students are encouraged to discuss the examination results with their academic mentors in preparation for the licensure examination (NCLEX). Cost of the examinations is borne by the student.



## National Council Licensure Examination (NCLEX)

In 1991, the governing body of the National Council of State Boards of Nursing Delegate Assembly voted to implement computerized adaptive testing (CAT) for the administration of the NCLEX-RN. The examination is assembled interactively as the candidate answers the questions creating an examination tailored to each candidate's skill level. Candidates do not need any computer experience in order to take the CAT examination; all candidates will receive the same training prior to taking the examination. The examination will be administered at designated sites around the state. There is no minimum amount of examination time; however, the successful candidate will answer a predetermined minimum number of 85 questions with a predetermined maximum of 165 throughout a 6-hour testing period. The Associate Dean will provide more specific information when it is time to apply to take the NCLEX examination. Application to sit for the exam in Missouri will include fingerprinting and criminal background checks. Information regarding eligibility to take the examination is found in the Missouri Nurse Practice Act.

If a student plans to take the NCLEX-RN outside Missouri, they are encouraged to consult the Associate Dean for Undergraduate and Prelicensure Education's Office about specific state application procedures.

## Commencement, Cap and Gown Information

General Information for Commencement activities, events and ordering caps and gowns can be found at [Saint Louis University Commencement : SLU](#). A special graduate fair is held in March. At the fair, students may purchase rings and personalized announcements. The Office of Community Relations will provide additional information to the graduates in the spring semester.

## School of Nursing Graduate Pins

Graduates are eligible to purchase the School of Nursing pin during the senior year through the bookstore, which is to be worn only after the degree is conferred. Purchase is optional. The selected company will provide information regarding price and purchase in the spring semester. Saint Louis University School of Nursing is not responsible for any transaction including the delivery of the pin.



## Handbook Approval

Approval Body: UPPC Program Director/Associate Dean/Option Coordinators

Approved: 01/11/95; 03/26/14; 8/14/19

Reviewed: 09/06; 09/10; 03/26/14; 8/13/19

Revised: 03/26/14; 10/21/15; 01/06/16, 6/22/16; 8/1/17; 8/16/19; 7/8/20; 7/26/21; 10/22





## Helpful Names and Contact Information

Dean, School of Nursing  
Dr. Danny Willis, Office: 226  
Telephone: 314-977-8909, Email: [Danny.Willis@slu.edu](mailto:Danny.Willis@slu.edu)



---

Associate Dean of Undergraduate and Pre-Licensure Education  
Dr. Kristine L'Ecuyer, Office: 214  
Telephone 314-977-8975, Email: [Kris.Lecuyer@slu.edu](mailto:Kris.Lecuyer@slu.edu)



---

Chief Diversity and Inclusion Officer  
Dr. Teri A. Murray, Office: 516  
Telephone: 314-977-6658, Email: [Teri.Murray@slu.edu](mailto:Teri.Murray@slu.edu)



---

Executive Assistant to the Dean and Associate Dean  
Ms. Marleen Albers, Office: 226  
Telephone: 314-977-8909, Email: [Marleen.Albers@slu.edu](mailto:Marleen.Albers@slu.edu)

---

Assistant to Assoc. Dean of Undergraduate & Pre-licensure Education  
Ms. Betty Bailey, Office: 210  
Telephone: 314-977-8951, Email: [Bailey.Bailey@slu.edu](mailto:Bailey.Bailey@slu.edu)

---

Coordinator, Traditional BSN Option Level One  
Dr. Karen Cuvar, Office: 335  
Telephone: 314-977-8925, Email: [Karen.Cuvar@slu.edu](mailto:Karen.Cuvar@slu.edu)



---

Coordinator, Traditional BSN Option Level Two  
Dr. Renée Davis, Office: 211  
Telephone: 314-977-8970, Email: [Renee.Davis@slu.edu](mailto:Renee.Davis@slu.edu)



---

### Coordinator, RN-BSN Option

Dr. Devita Stallings, Office: 418

Telephone: 314-977-8903, Email: [Devita.Stallings@slu.edu](mailto:Devita.Stallings@slu.edu)



---

### Coordinator, Accelerated BSN Option

Dr. Laura McLaughlin, Office 436

Telephone: 314-977-8830, Email [Laura.McLaughlin@slu.edu](mailto:Laura.McLaughlin@slu.edu)



---

### Coordinator, Accelerated MSN Option

Dr. Bobbi Shatto, Office: 331

Telephone 314-977-8947, Email: [Bobbi.Shatto@slu.edu](mailto:Bobbi.Shatto@slu.edu)



---

### Coordinator, e-Technology Coordinator

Cynthia Rubbelke, Office: 533

Telephone 314-977-8960, Email: [Cynthia.Rubbelke@slu.edu](mailto:Cynthia.Rubbelke@slu.edu)



---

### Coordinator, Clarke Learning Laboratory

Nikki Rogers, MSN, RN, Office: 126

Telephone: 314-977-8901, Email: [Nikki.Rogers@slu.edu](mailto:Nikki.Rogers@slu.edu)

---

### Coordinator, Clinical Resources

Carolyn Layloff, MSN, RN, Office: 217

Telephone: 314-977-6653, Email: [Carolyn.Layloff@slu.edu](mailto:Carolyn.Layloff@slu.edu)

---

### Coordinator, Clinical Contracts

Kari Elbe, Office: 219

Telephone: 314-977-8904, Email: [Kari.Elbe@slu.edu](mailto:Kari.Elbe@slu.edu)

---

### Recruitment Specialist – Scholarship Information

Victoria Shratz, Office:

Telephone: 314-977-8995, Email: [victoria.shratz@slu.edu](mailto:victoria.shratz@slu.edu)

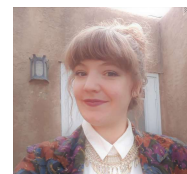


---

Student Services Associate –  
Traditional BSN Option & CastleBranch

Elizabeth Verslues, Office: 213

Telephone: 314-977-7563, Email: [elizabeth.verslues@slu.edu](mailto:elizabeth.verslues@slu.edu)




---

Student Services Associate – ABSN, AMSN & RN-BSN Options

TBA, Office: 341

Telephone 314-977-8907, Email:

---

Retention Specialist

Emily Francis, Office: 511

Telephone: 314-977-7565, Email: [emily.francis.1@slu.edu](mailto:emily.francis.1@slu.edu)




---

Professional Academic Advisor Advises  
Students with last name A-Li

Kristin Rascoosin, Office 535

Telephone: 314-977-1983, Email: [kristin.rascoosin@slu.edu](mailto:kristin.rascoosin@slu.edu)




---

Professional Academic Advisor Advises  
Students with last name Lo-Z

Mr. Jerrod Turner, Office: 534

Telephone: 314-977-8992, Email: [Jerrod.Turner@slu.edu](mailto:Jerrod.Turner@slu.edu)




---

Campus Ministry South Campus

Ms. Erin Fitzpatrick, Caroline Building, C207

Telephone: 977-8071, Email: [Erin.Fitzpatrick@slu.edu](mailto:Erin.Fitzpatrick@slu.edu)




---

Center for Accessibility and Disability Resources

Busch Student Center, Suite 331 (20 N. Grand Blvd.)

Email: [accessibility\\_disability@slu.edu](mailto:accessibility_disability@slu.edu) Telephone: 314-977-3484

---

University Writing Services

[University Writing Services](#)

Busch Student Center, Suite 331

Pius XII Memorial Library, Room 320

Trudy Busch Valentine School of Nursing, Suite 114

[writing@slu.edu](mailto:writing@slu.edu)

---

Dean of Students

[Dean of Students Office](#)

Busch Student Center, Suite 356

Email: [deanofstudents@slu.edu](mailto:deanofstudents@slu.edu); Telephone: 314-977-9378

---



---

Institutional Equity and Diversity Director

Office of Institutional Equity and Diversity

Justin Lacy, DuBourg Hall, Room 36

Email: [Justin.Lewis@slu.edu](mailto:Justin.Lewis@slu.edu) Telephone: 314-977-3065



---

Title IX Coordinator

Title IX Information & Resources: Sexual Harassment, Sexual Assault,

Dating and Domestic Violence, and Stalking

Anna R. Kratky, DuBourg Hall, Room 36

Email: [Anna.Kratky@slu.edu](mailto:Anna.Kratky@slu.edu) Telephone: 314-977-3886



---

Housing and Res Life

Saint Louis University Housing and Residence Life

DuBourg Hall, Room 157

314-977-2811 or by email at [reslife@slu.edu](mailto:reslife@slu.edu).

---

University Counseling Center

University Counseling Center

Wuller Hall 2nd floor

Telephone: 314-977-TALK

---

Student Health Services

Student Health Center

Marchetti Tower East

Telephone: 314-977-2323

---

Department of Public Safety

Public Safety

Wool Center, Room 114

Telephone: 314-977-3000

---

Suicide & Crisis Lifeline

Dial 988

---

School of Nursing Fax Number

Second Floor: 314-977-8949



Saint Louis University  
**Incident Report**

Risk Management  
 Phone | 314.977.3952  
 Fax | 314.977.1457  
 riskmgmt@slu.edu

Name: \_\_\_\_\_ Date of Birth: \_\_\_\_\_ Age: \_\_\_\_\_  
 Status: Student  Visitor  Volunteer  Employee  Sex:  Male  Female  
 Home Address: \_\_\_\_\_ School or Company: \_\_\_\_\_  
 City: \_\_\_\_\_ State/Zip: \_\_\_\_\_  
 Home Phone: \_\_\_\_\_ Work Phone: \_\_\_\_\_  
 Cell Phone: \_\_\_\_\_ Email Address: \_\_\_\_\_

Location of Incident: \_\_\_\_\_ Campus  North  South  
 Time and Date of Incident: \_\_\_\_\_ Was DPS contacted  Yes  No  
 If Applicable - SLU Course Instructor: \_\_\_\_\_

1. How did the incident occur? (explain) in detail \_\_\_\_\_  
 \_\_\_\_\_  
 \_\_\_\_\_

2. What activity was being done at the time of the incident?  
 \_\_\_\_\_  
 \_\_\_\_\_

3. Did the incident lead to an injury? Be specific? Was medical treatment needed?  Yes  No  
 \_\_\_\_\_  
 \_\_\_\_\_

**Witness's Information**

Name: \_\_\_\_\_ Daytime Phone: \_\_\_\_\_  
 Address: \_\_\_\_\_ City/State/Zip \_\_\_\_\_  
 \_\_\_\_\_

Witness's account of event:  
 \_\_\_\_\_  
 \_\_\_\_\_

Signature: \_\_\_\_\_ Position: \_\_\_\_\_ Date: \_\_\_\_\_

**Report Filer's Information**

Name: \_\_\_\_\_ Daytime Phone: \_\_\_\_\_  
 Address: \_\_\_\_\_ City/State/Zip \_\_\_\_\_  
 Report Filer's account of event:  
 \_\_\_\_\_  
 \_\_\_\_\_

Signature: \_\_\_\_\_ Position: \_\_\_\_\_ Date: \_\_\_\_\_

*Do not use this form to report employee injuries.  
 Email or fax this form to Risk Management within 48 hours of the incident.*



Higher Purpose. Greater Good.™





# SAINT LOUIS UNIVERSITY™

— EST. 1818 —



Higher Purpose. Greater Good.™

